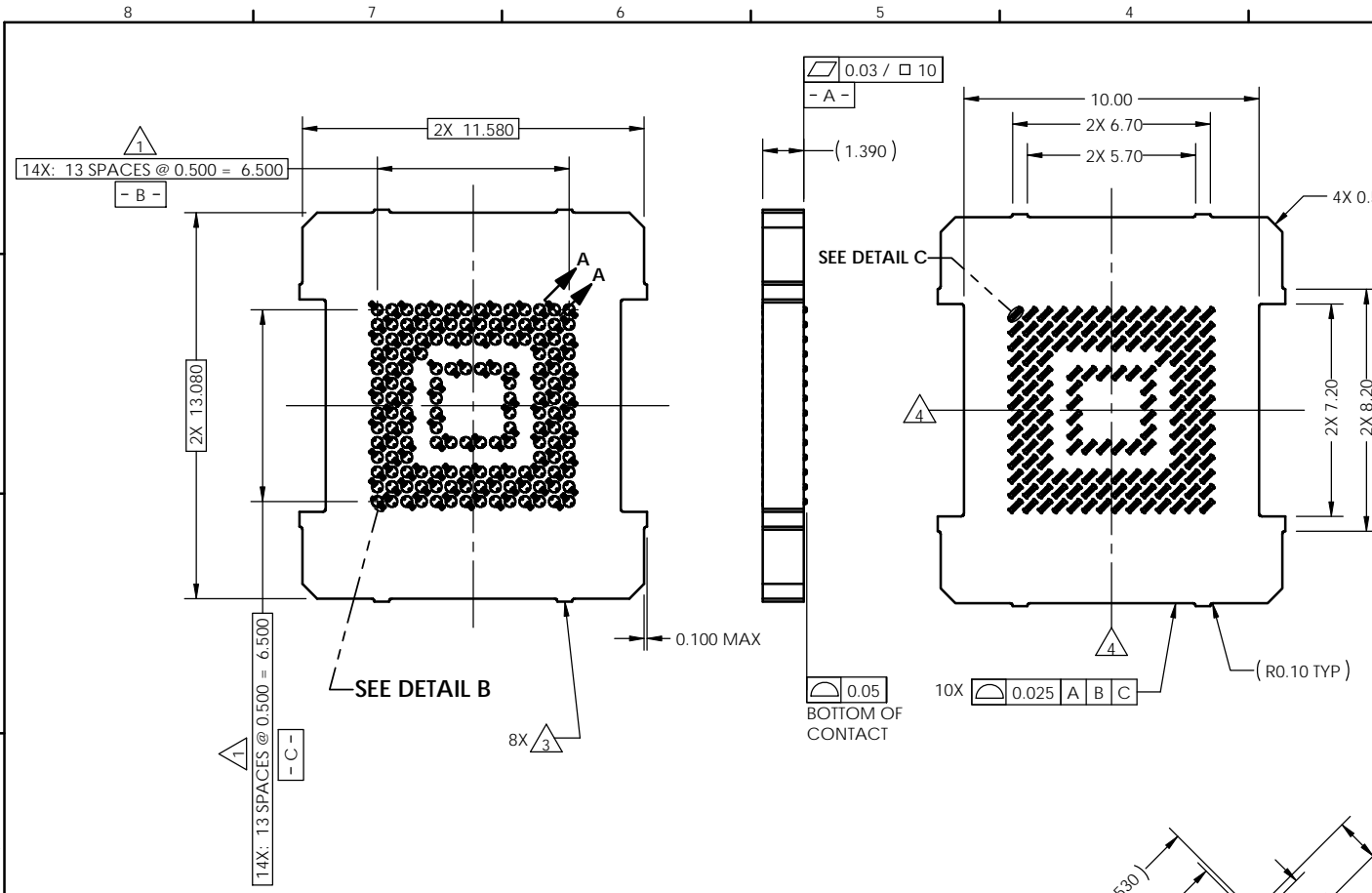
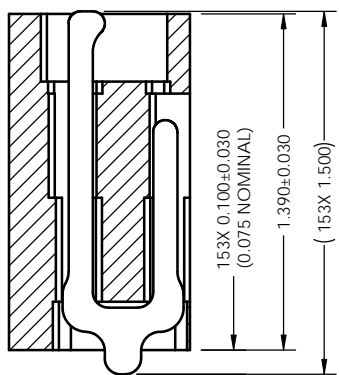


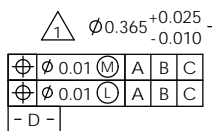
REV	ECO	BY	DESCRIPTION	APV	DATE
A	30879	JN	Initial Design	KW	08/30/11
B	31043	SK	Updated border	KW	03/07/12



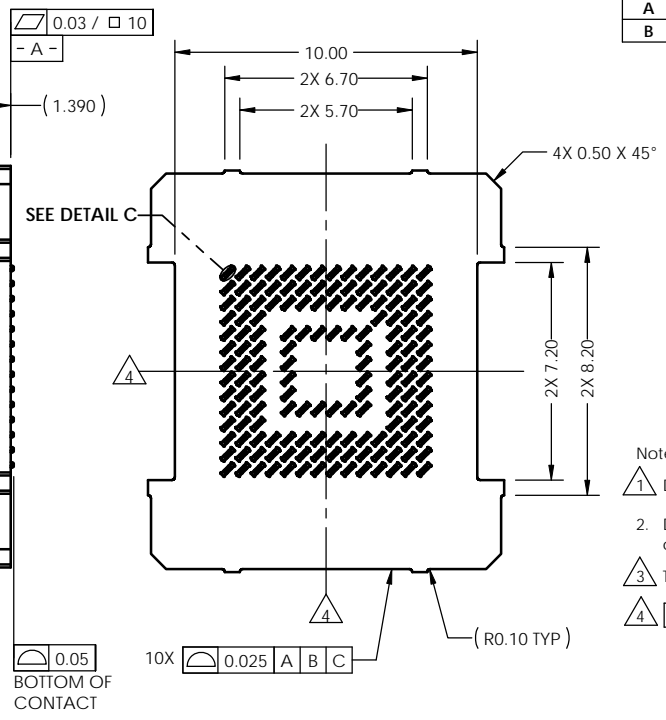
- Notes:
- 1 Dimension locates center of contact/slot.
 - 2. Datums -B- and -C- are determined by $\phi 0.365$ openings in corner slots.
 - 3 Tooling marks permitted. Maximum 0.10 protrusion (shown).
 - 4 -E- Center of contact pattern.



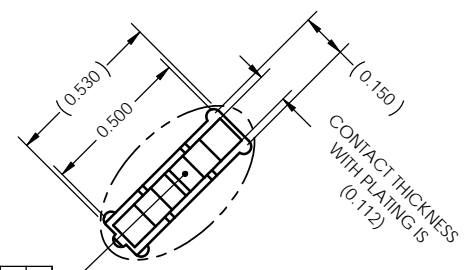
SECTION A-A
SCALE 8:1



DETAIL B (153X)
SCALE 10:1

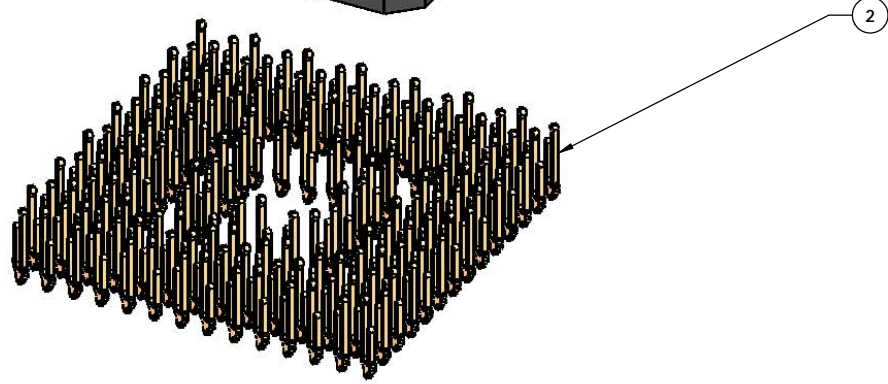
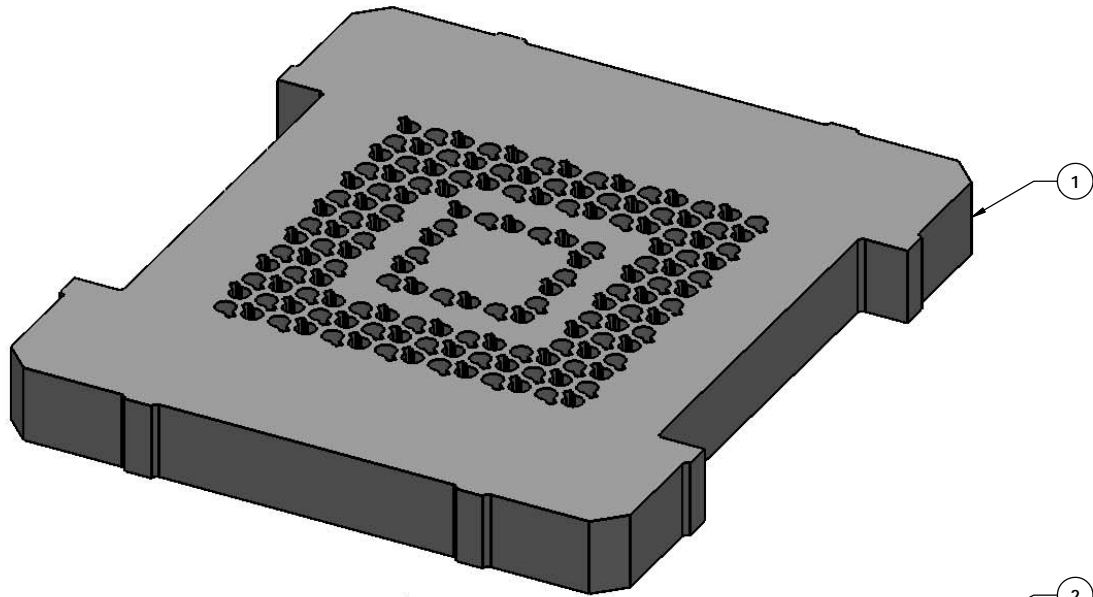


0.05
BOTTOM OF CONTACT



DETAIL C (153X)
SCALE 10:1

UNLESS OTHERWISE SPECIFIED DIMENSIONS ARE IN MILLIMETERS DIM'S APPLY AFTER PLATING TOLERANCES UNLESS OTHERWISE NOTED:		THE INFORMATION CONTAINED IN THIS DRAWING IS THE SOLE PROPERTY OF RAD INTERCONNECT SOLUTIONS. ANY REPRODUCTION IN PART OR WHOLE WITHOUT THE WRITTEN PERMISSION OF RAD INTERCONNECT SOLUTIONS IS PROHIBITED.	
DRAWING APPROVALS		7115 NORTHLAND TERRACE SUITE 400 BROOKLYN PARK, MN 55428 (763) 509-0066	
NAME	DATE	CS, 153G4011.5X13-0.50, W/O SOLDER BALLS	
J. Nied	08/30/11		
NAME	DATE	CS, 153G4011.5X13-0.50, W/O SOLDER BALLS	
K. Wilson	08/30/11	107248-0026	
THIRD ANGLE PROJECTION		SCALE	SHEET
SEE BOM		SEE BOM	1 of 2



ITEM NO.	QTY.	PART NUMBER	DESCRIPTION
1	1	107247-0026	HSG, 153G4011.5X13-0.50
2	153	104468-0015	CONTACT, GRYH, HALF

THE INFORMATION CONTAINED IN THIS DRAWING IS THE SOLE PROPERTY OF R&D INTERCONNECT SOLUTIONS. ANY REPRODUCTION IN PART OR WHOLE WITHOUT THE WRITTEN PERMISSION OF R&D INTERCONNECT SOLUTIONS IS PROHIBITED.

UNLESS OTHERWISE SPECIFIED
 - DIMENSIONS ARE IN MILLIMETERS
 - DIMS APPLY AFTER PLATING
 TOLERANCES UNLESS OTHERWISE NOTED: DECIMALS
 ANGLES X.X ±0.25
 X.XX ±0.10
 X.XXX ±0.050

7115 NORTHLAND TERRACE SUITE 400
 BROOKLYN PARK, MN 55428
 (763) 509-0066

**CS, 153G4011.5X13-0.50,
 W/O SOLDER BALLS**

LEGEND:
 (A) NOTE CALLOUT
 (B) REVISION CHANGE
 (C) ITEM NUMBER

REV	CAD FORMAT	DRAWING NO.	REV
C	SOLIDWORKS	107248-0026	B
SCALE	MATERIAL	See Page 1	
2		2 of 2	