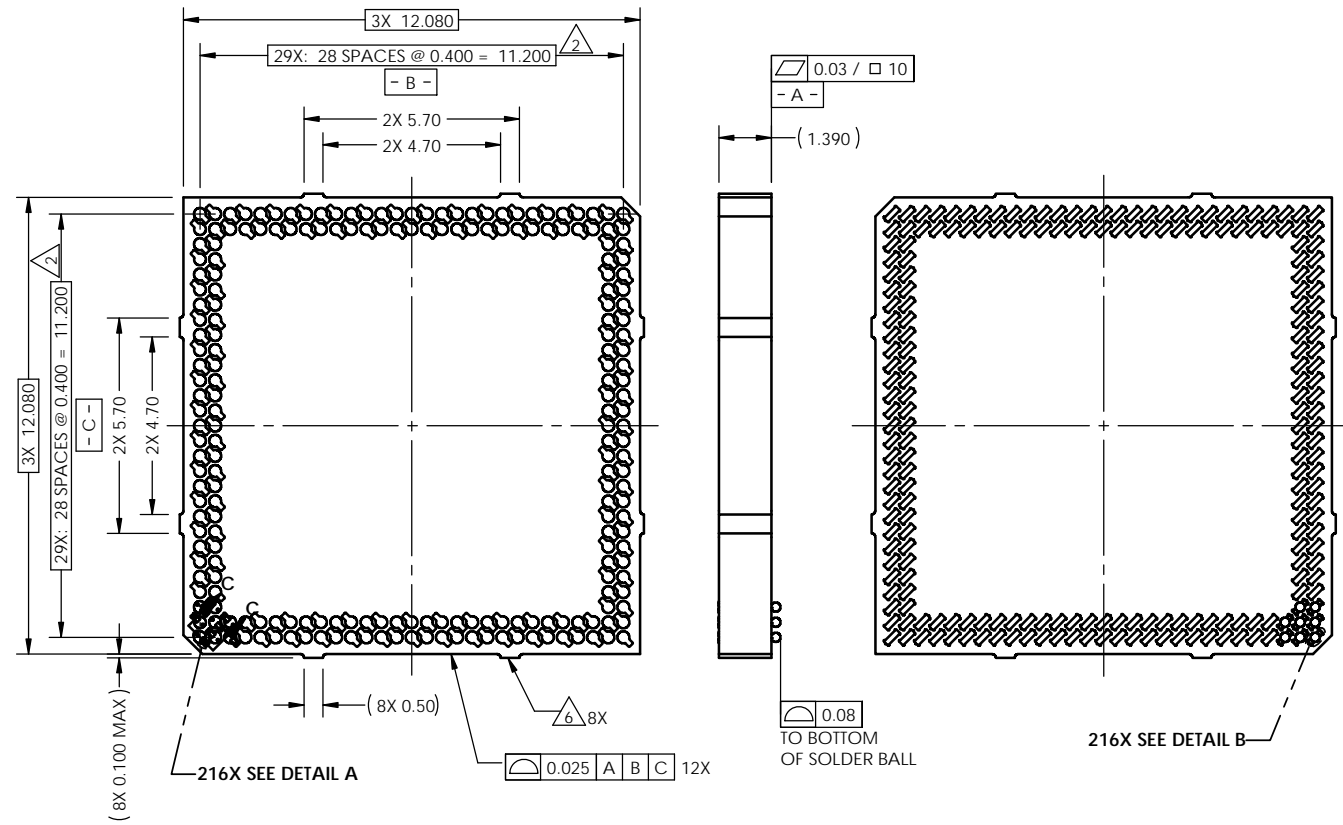
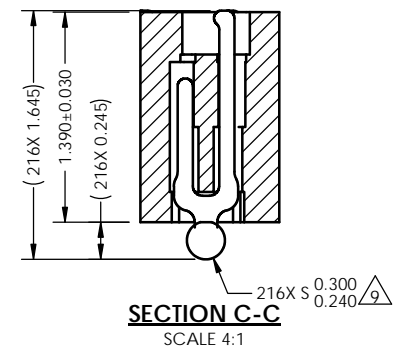
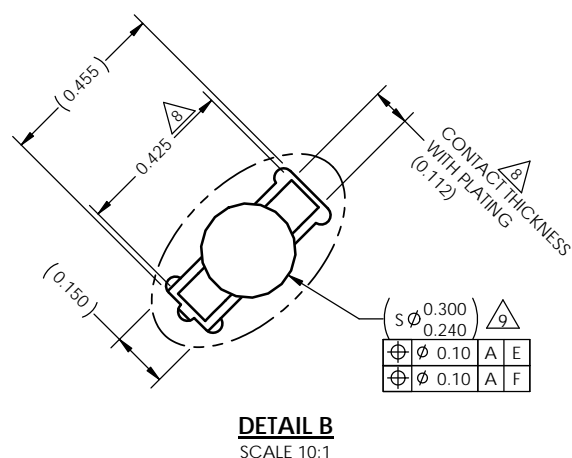
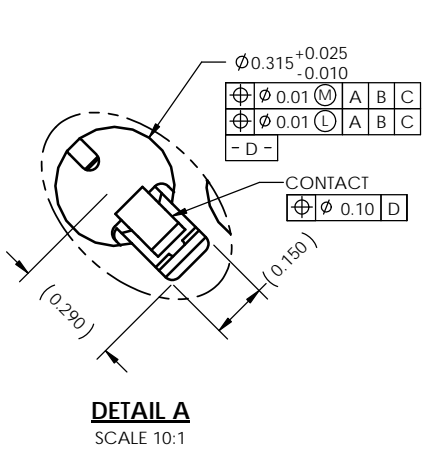


REV	ECO	BY	DESCRIPTION	APV	DATE
A	31310	MP	Initial Design	MP	06/14/13



- Notes:
- Reference HSIO specification 103862-0004 for solder attachment.
  - Locates center of contact/slot.
  - Reference HSIO specification 103863-0001 for application notes.
  - Footprint part number is 104311-0244.
  - Datums - B - and - C - are determined by  $\phi 0.415$  openings on corner slots.
  - Tooling marks permitted. Maximum 0.10 protrusion (shown).
  - E - Center of ball pattern.
  - F - Center of contact.
  - Eutectic solder balls.



Parts List	
Part Number	Description
107140-0018	SCKT, 216G4012-0.40
103864-0002	PRESS, DEVICE INSERT, GRYP, 12X12 (SOLD SEPERATELY)
105900-0004	EXTRACTION TOOL, 4 X 53 (SOLD SEPERATELY)
104553-0186	STEN FLEX 216G4012-0.40 (SOLD SEPERATELY)

**UNLESS OTHERWISE SPECIFIED:**

DIMENSIONS ARE IN MILLIMETERS

TOLERANCES:

ANGULAR:  $\pm 1^\circ$

XX:  $\pm 0.25$

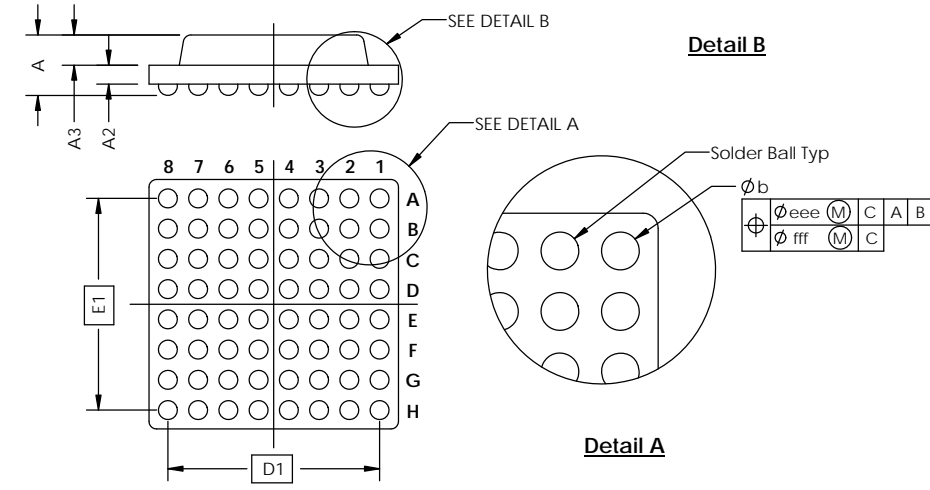
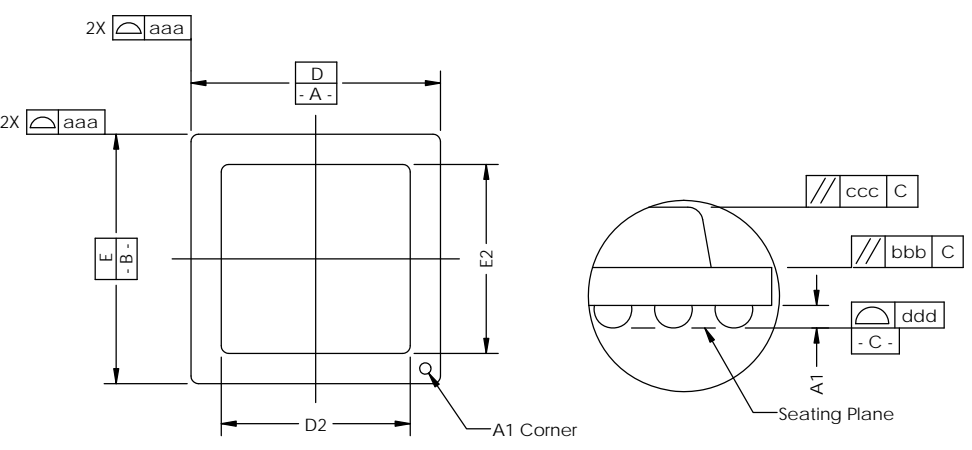
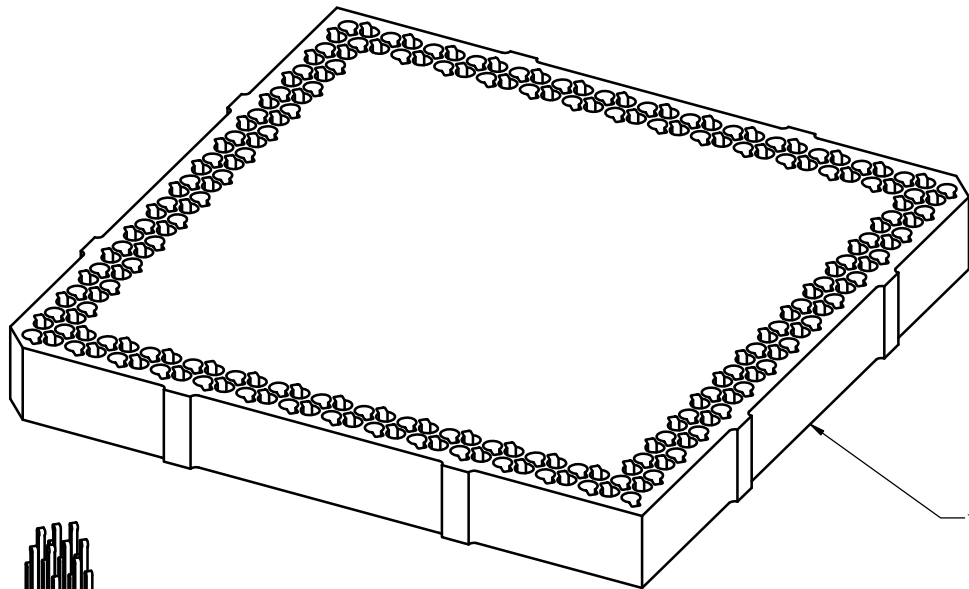
XXX:  $\pm 0.10$

XXXX:  $\pm 0.050$

NAME	DATE	<b>HSIO TECHNOLOGIES, LLC.</b> 13300 67th AVENUE NORTH MAPLE GROVE, MINNESOTA 55311 763-447-6260
DRAWN	MP 06/14/13	
CHECKED	MP 06/14/13	TITLE: SCKT, 216G4012-0.40 WITH EUTECTIC SOLDER BALLS DWG. NO.
LEGEND:		
$\triangle$ NOTE CALLOUT		<b>108388-0018</b>
$\square$ REVISION CHANGE		
$\circ$ ITEM NUMBER		REV
		<b>A</b>
DO NOT SCALE DRAWING		SCALE: 10:1
		SIZE: C
		SHEET 1 OF 2

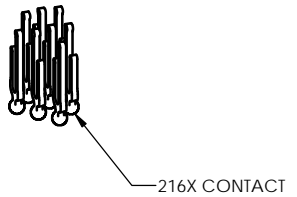
SOCKET FOR DEVICES THAT ARE WITHIN THESE SPECIFICATIONS					
Lead Count	<b>N</b>	216	Package Size	<b>D</b>	12.00
Columns	<b>ND</b>	29		<b>E</b>	12.00
Rows	<b>NE</b>	29	Ball Spacing	<b>D1</b>	11.200
Pitch	<b>e</b>	0.40		<b>E1</b>	11.200
Ball Size	<b>b</b>	0.25±0.05	Encapsulant/ Top Size	<b>D2</b>	n/a
Total Thickness	<b>A</b>	n/a		<b>E2</b>	n/a
Ball Height	<b>A1</b>	0.175 MIN	Pattern Style	Perimeter*	
Substrate Thickness	<b>A2</b>	n/a	Perimeter Rows	2	
Top Thickness	<b>A3</b>		Center Array	N/A	
Form Tolerances					
Edge	<b>aaa</b>	0.10	Bottom	<b>ddd</b>	0.08
Substrate	<b>bbb</b>	0.10	Position	<b>eee</b>	0.15
top	<b>ccc</b>	0.10	Position	<b>fff</b>	0.05

All dimensions are in millimeters.  
\* See footprint for pattern details.



**Generic Representation with Full Grid Array**


107143-0018



**PROPRIETARY AND CONFIDENTIAL**  
THE INFORMATION CONTAINED IN THIS DRAWING IS THE SOLE PROPERTY OF HSIO TECHNOLOGIES, LLC. ANY REPRODUCTION IN PART OR AS A WHOLE WITHOUT THE WRITTEN PERMISSION OF HSIO TECHNOLOGIES, LLC IS PROHIBITED.

UNLESS OTHERWISE SPECIFIED:	NAME	DATE	<b>HSIO TECHNOLOGIES, LLC.</b> 13300 67th AVENUE NORTH MAPLE GROVE, MINNESOTA 55311 763-447-6260
DIMENSIONS ARE IN MILLIMETERS	DRAWN	MP 06/14/13	
TOLERANCES: ANGULAR: ± 1° X.X ±0.05 X.XX ±0.10 X.XXX ±0.050	CHECKED	MP 06/14/13	

LEGEND:  
 △ NOTE CALLOUT  
 ○ REVISION CHANGE  
 ○ ITEM NUMBER

  
**HSIO**technologies

TITLE:	
SCKT, 216G4012-0.40 WITH EUTECTIC SOLDER BALLS	
DWG. NO.	REV
<b>108388-0018</b>	<b>A</b>
SCALE: 10:1	SIZE: C SHEET 2 OF 2