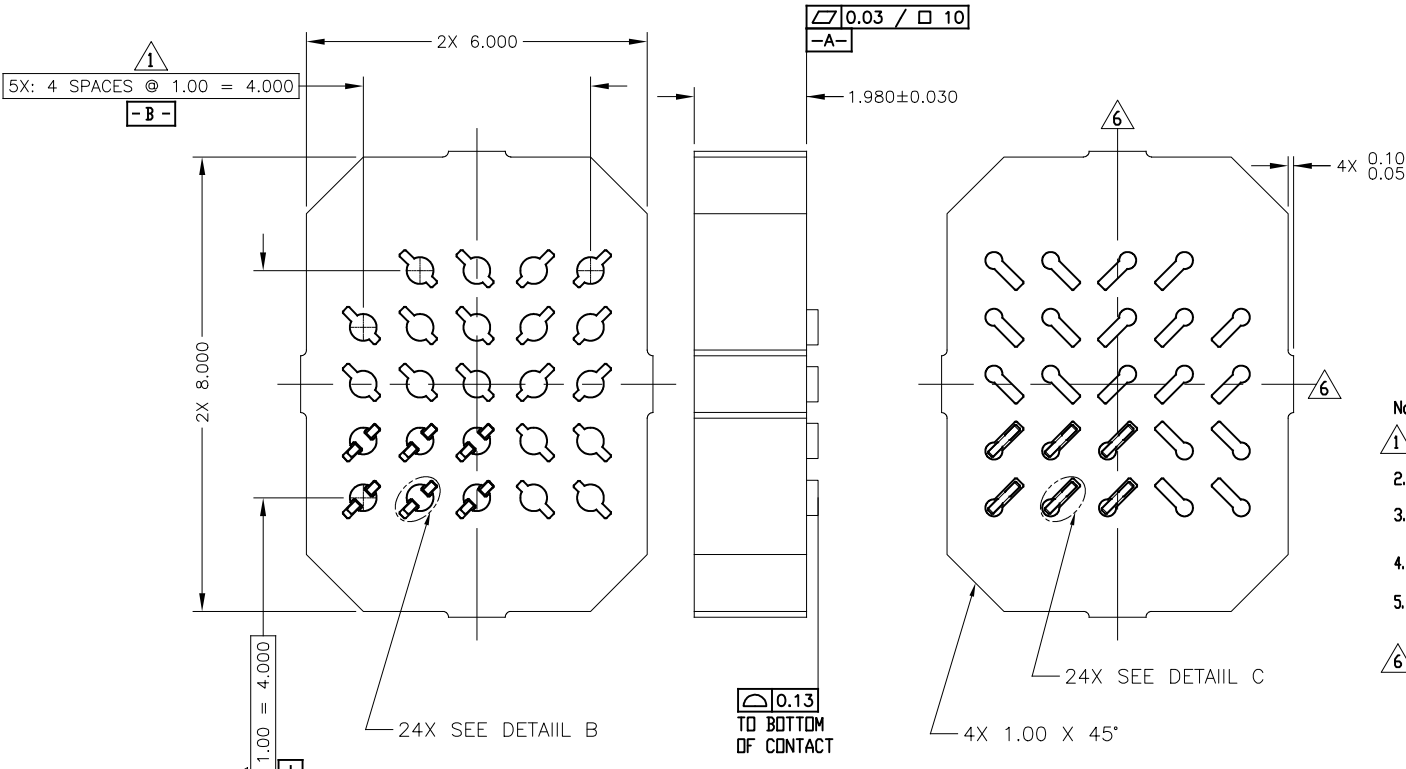
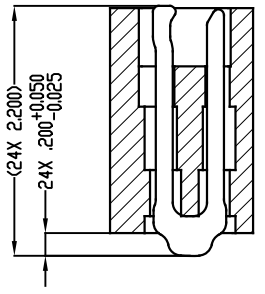


REV	ECO	BY	DESCRIPTION	APV	DATE
A	31490	RS	Initial Design	NSJ	03/27/14
B	8347	DJP	ADDED TIE BARS AND UPDATED PARTS LIST	RS	2/21/24

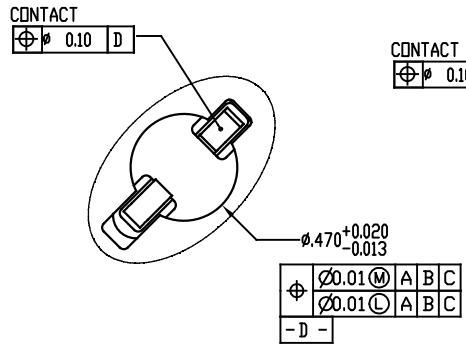


- Notes:
1. Dimension locates center of slot/contact.
 2. Unless otherwise noted, all features located $\oplus 0.10$ A B C
 3. Reference Ironwood Electronics, Inc specification 103862-0001 for Application notes.
 4. Press size is 6.00 X 8.00.
 5. Datum -B- and -C- are defined by $\phi 0.470$ features on corner slots.
 6. -E- center of contact pattern.

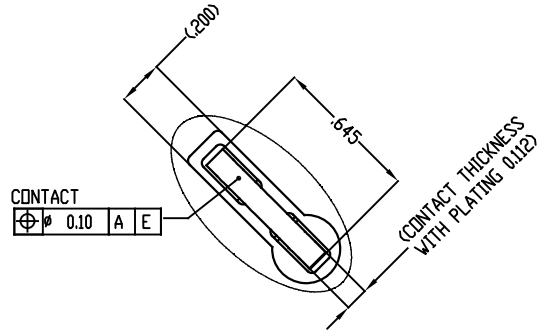
PARTS LIST	
Part Number	Description
107282-0010	SCKT, 24G80 6X8-1.0
107283-0010	CS, 24G80 6X8-1.0
103864-0107	PRESS, DEV INS, 6.00X8.00 (SOLD SEP.)
104553-0334	STEN,FLEX, 24G80 6X8-1.0 (SOLD SEP.)
108639-0239	FRAME, ALIGN 6.0X8.0 (SOLD SEP.)



SECTION A-A
SCALE 5:1
(VIEW ROTATED 45° CW)



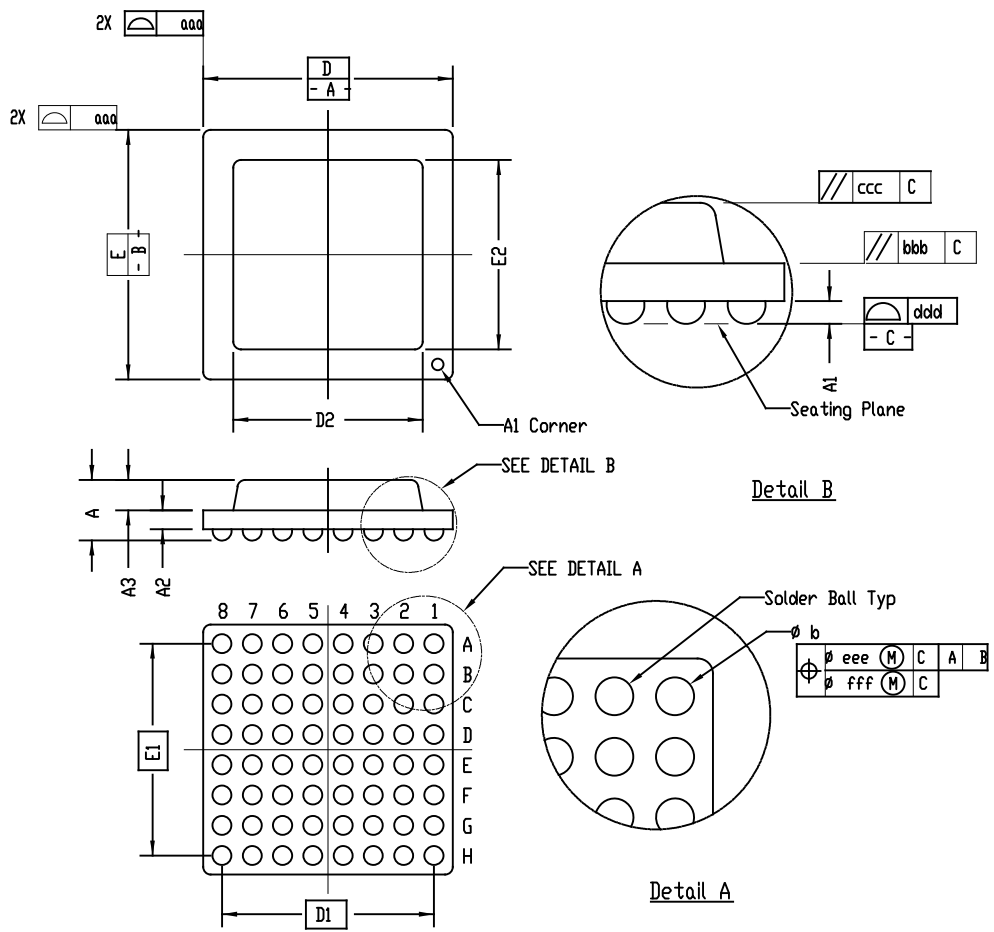
DETAIL B (24X)
SCALE 10:1



DETAIL C
SCALE 10:1

UNLESS OTHERWISE SPECIFIED - DIMENSIONS ARE IN MILLIMETERS - DIM'S APPLY AFTER PLATING		THE INFORMATION CONTAINED IN THIS DRAWING IS THE SOLE PROPERTY OF IRONWOOD ELECTRONICS, INC. ANY REPRODUCTION IN PART OR WHOLE WITHOUT THE WRITTEN PERMISSION OF IRONWOOD ELECTRONICS, INC. IS PROHIBITED.	
TOLERANCES UNLESS OTHERWISE NOTED:		IRONWOOD ELECTRONICS, INC. 1335 EAGANDALE CT. EAGAN, MN 55121. 952-229-8200	
ANGLES ±1°	DECIMALS .XX ±0.25 XXX ±0.10 XXXX ±0.050	DRAWING APPROVALS	
LEGEND:	NOTE CALLOUT	NAME	DATE
(X)	REVISION CHANGE	R. Sewharack	03/27/14
(X)	ITEM NUMBER	N. St Jacques	03/27/14
THIRD ANGLE PROJECTION		TITLE	
		SCKT, 24G80 6.0X8.0-1.0	
SCALE		CAD FORMAT	DRAWING NO.
SEE B.O.M		AUTOCAD	107282-0010
SHEET		REV.	B
1 of 2			

SOCKET FOR DEVICES THAT ARE WITHIN THESE SPECIFICATIONS					
Lead Count	N	24	Package Size	D	6.000
Columns	ND	5		E	8.000
Rows	NE	5	Ball Spacing	D1	4.000
Pitch	e	1.00		E1	4.000
Ball Size	b	0.40±0.05	Encapsulant/ Top Size	D2	n/a
Total Thickness	A	n/a		E2	n/a
Ball Height	A1	0.250 Min.	Pattern Style	IRREGULAR*	
Substrate Thickness	A2	n/a	Perimeter Rows	n/a	
Top Thickness	A3		Center Array	n/a	
Form Tolerances					
Edge	aaa	0.20	Bottom	ddd	0.15
Substrate	bbb	0.20	Position	eee	0.20
top	ccc	0.20	Position	fff	0.08
All dimensions are in millimeters.					



Generic Representation with Full Grid Array

THE INFORMATION CONTAINED IN THIS DRAWING IS THE SOLE PROPERTY OF IRONWOOD ELECTRONICS, INC. ANY REPRODUCTION IN PART OR WHOLE WITHOUT THE WRITTEN PERMISSION OF IRONWOOD ELECTRONICS, INC. IS PROHIBITED.			
UNLESS OTHERWISE SPECIFIED - DIMENSIONS ARE IN MILLIMETERS - DIM'S APPLY AFTER PLATING		IRONWOOD ELECTRONICS, INC. 1335 EAGANDALE CT EAGAN, MN 55121. 952-229-8200	
TOLERANCES UNLESS OTHERWISE NOTED:		TITLE SCKT, 24G80 6X8-1.0	
ANGLES ±1°	DECIMALS X.XX ±0.25 X.XXX ±0.10 X.XXXX ±0.050	REV. C	B
LEGEND:	NOTE CALLOUT	SCALE	See Pg 1
①	REVISION CHANGE	ITEM NUMBER	2of2