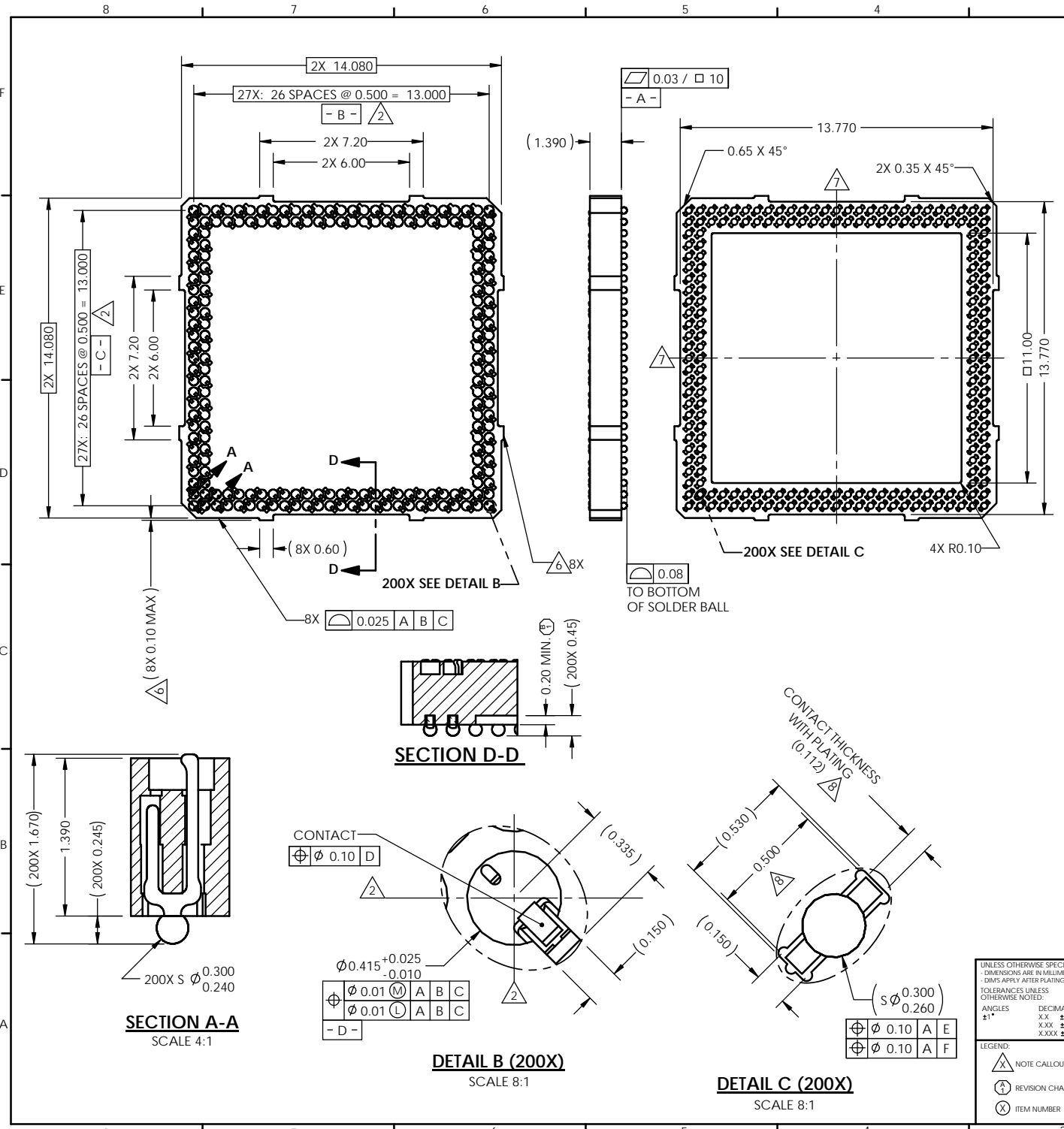


REV	ECO	BY	DESCRIPTION	APV	DATE
A	30359	EJT	Initial Design	MP	05/20/10
B	30649	MP	1) Added "MIN" to pocket depth	MP	12/09/10
C	31156	WB	Updated to current standard	KW	08/07/12



Notes:

- Reference R&D Interconnect Solutions specification 103862-0004 for solder attachment.
- Dimension locates center of contact/ slot.
- Reference R&D Interconnect Solutions specification 103863-0001 for application notes.
- Footprint part number is 104311-0223.
- Datums B and C are determined by  $\phi 0.415$  features on corner slots.
- Tooling marks permitted. Maximum 0.10 protrusion (shown).
- E - Center of Ball Pattern.
- F - Center of Contact.
- Unless otherwise noted, all features located  $\phi 0.10$  A B C
- Press size 14.00X14.00.

PARTS LIST			
Item	Qty	Part Number	Description
-	-	107022-0030	SCKT, 200G40 14-0.50
1	1	107269-0002	CS, 200G40 14-0.50
-	-	103864-0004	PRESS, DEVICE INSERT, GRYP 14X14 (SOLD SEPARATELY)
-	-	105900-0004	EXTRACTION TOOL, 4 X 53 (SOLD SEPARATELY)
-	-	107030-0030	STEN FLEX 200G40 14-0.50 (SOLD SEPARATELY)

**SECTION A-A**  
SCALE 4:1

**DETAIL B (200X)**  
SCALE 8:1

**DETAIL C (200X)**  
SCALE 8:1

UNLESS OTHERWISE SPECIFIED DIMENSIONS ARE IN MILLIMETERS DIMS APPLY AFTER PLATING TOLERANCES UNLESS OTHERWISE NOTED:

DECIMALS	XX ±0.25
XXX	±0.10
XXXX	±0.050

ANGLES ±1°

THE INFORMATION CONTAINED IN THIS DRAWING IS THE SOLE PROPERTY OF R&D INTERCONNECT SOLUTIONS. ANY REPRODUCTION IN PART OR WHOLE WITHOUT THE WRITTEN PERMISSION OF R&D INTERCONNECT SOLUTIONS IS PROHIBITED.

CAD GENERATED DRAWING DO NOT MANUALLY UPDATE

7115 NORTHLAND TERRACE SUITE 400  
BROOKLYN PARK, MN 55428  
(763) 509-0066

**DRAWING APPROVALS**

NAME	DATE
E. Turin	05/18/10
M. Peery	05/20/10

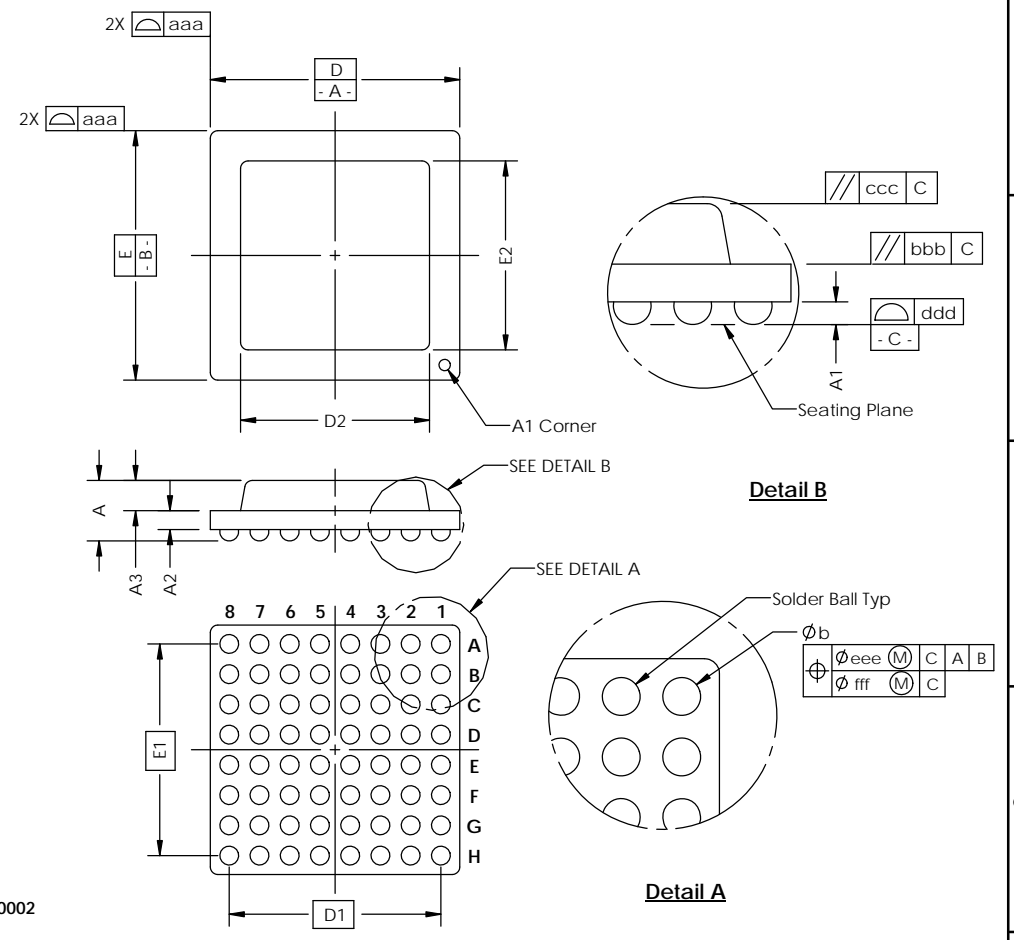
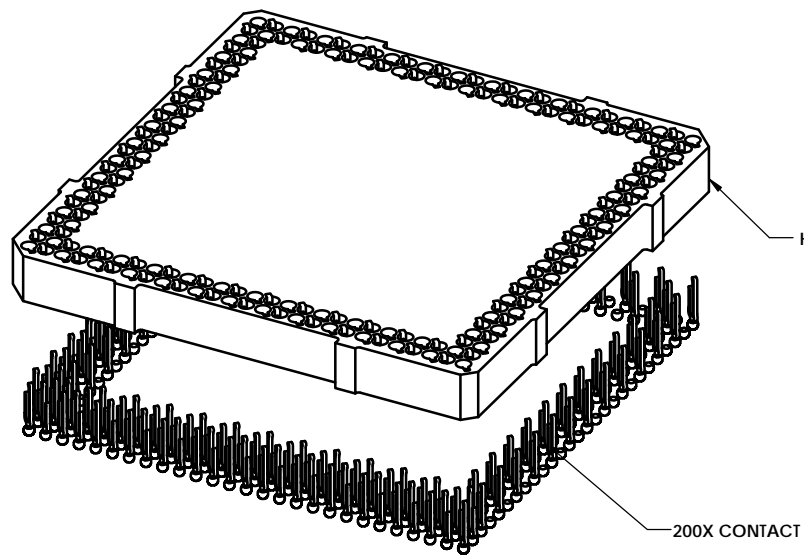
**SCKT, 200G40 14-0.50**

THIRD ANGLE PROJECTION

SCALE	C	NATURAL	SEE BOM
SHEET	1	TOTAL	2

SOCKET FOR DEVICES THAT ARE WITHIN THESE SPECIFICATIONS					
Lead Count	<b>N</b>	200	Package Size	<b>D</b>	14.00
Columns	<b>ND</b>	27		<b>E</b>	14.00
Rows	<b>NE</b>	27	Ball Spacing	<b>D1</b>	13.000
Pitch	<b>e</b>	0.50		<b>E1</b>	13.000
Ball Size	<b>b</b>	0.35±0.05	Encapsulant/ Top Size	<b>D2</b>	n/a
Total Thickness	<b>A</b>	n/a		<b>E2</b>	n/a
Ball Height	<b>A1</b>	0.250 MIN	Pattern Style	Perimeter*	
Substrate Thickness	<b>A2</b>	n/a	Perimeter Rows	2	
Top Thickness	<b>A3</b>		Center Array	N/A	
Form Tolerances					
Edge	<b>aaa</b>	0.10	Bottom	<b>ddd</b>	0.08
Substrate	<b>bbb</b>	0.10	Position	<b>eee</b>	0.15
top	<b>ccc</b>	0.10	Position	<b>fff</b>	0.05

All dimensions are in millimeters.  
\* See footprint for pattern details.



**Generic Representation with Full Grid Array**

<small>THE INFORMATION CONTAINED IN THIS DRAWING IS THE SOLE PROPERTY OF R&amp;D INTERCONNECT SOLUTIONS. ANY REPRODUCTION IN PART OR WHOLE WITHOUT THE WRITTEN PERMISSION OF R&amp;D INTERCONNECT SOLUTIONS IS PROHIBITED.</small>			
<small>UNLESS OTHERWISE SPECIFIED - DIMENSIONS ARE IN MILLIMETERS - DIMES APPLY AFTER PLATING TOLERANCES UNLESS OTHERWISE NOTED:</small>		7115 NORTHLAND TERRACE, SUITE 400 BROOKLYN PARK, MN 55428 (763) 509-0066	
<small>DECIMALS X.X ±0.25 X.XX ±0.10 X.XXX ±0.050</small>	<b>SCKT, 200G40 14-0.50</b>		
<small>LEGEND:</small> NOTE CALLOUT REVISION CHANGE ITEM NUMBER	<small>DATE FORNAT</small> <b>C</b>	<small>DESIGN/REV</small> <b>107022-0030</b>	<small>REV</small> <b>C</b>
<small>SCALE</small> See Page 1	<small>SHEET</small> 2 of 2		