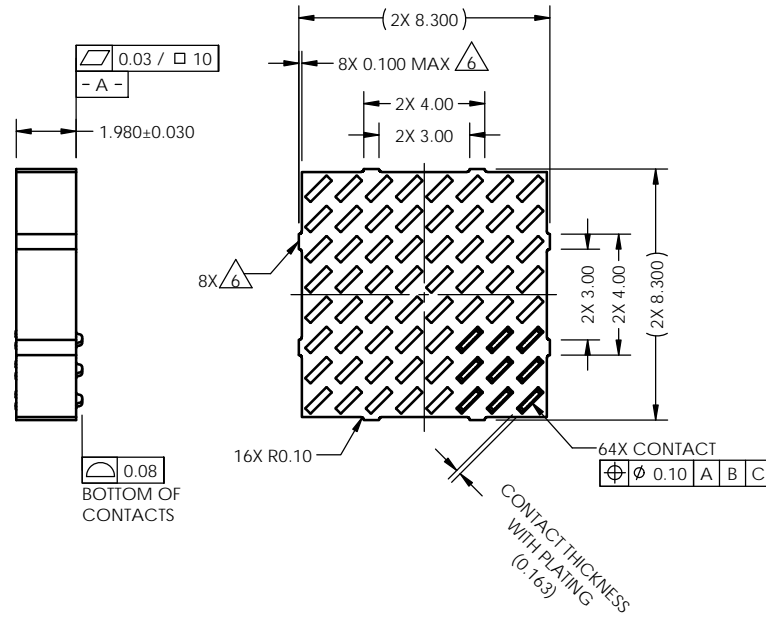
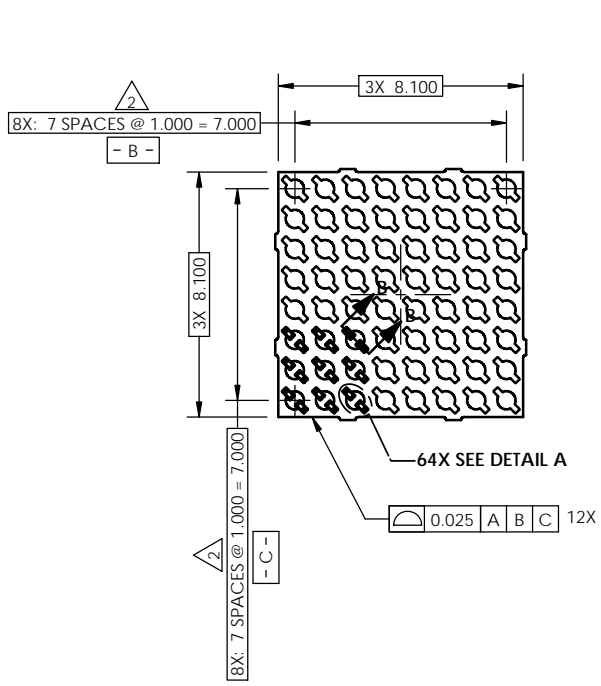
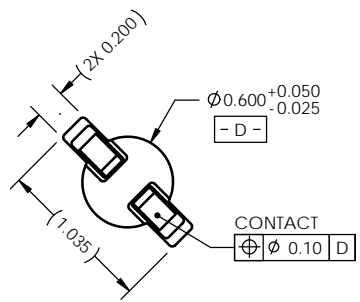


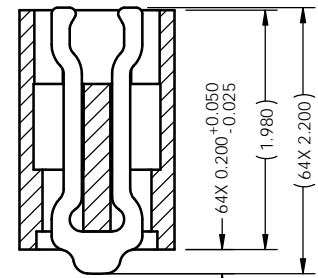
| REV | ECO | BY | DESCRIPTION | APV | DATE |
|-----|-------|----|----------------|-----|----------|
| A | 31430 | AS | Initial Design | MP | 12/10/13 |



- Notes:
1. Dimension locates center of contact/slot.
 2. Footprint part number is 104311-0412.
 3. Press size is 11.0 X 13.0.
 4. Datums -B- and -C- are determined by Ø0.600 opening in corner losts.
 5. Unless otherwise specified, all features located $\oplus 0.10$ A B C



DETAIL A (64X)
SCALE 5:1



SECTION B-B
SCALE 4:1
(VIEW ROTATED 45° CW)

| PARTS LIST | |
|-------------|--|
| PART NUMBER | DESCRIPTION |
| 104671-0038 | CS, 64GRY8.1X8.1-1.0 |
| 103864-0041 | PRESS, DEV INS, 11X13 (SOLD SEPARATELY) |
| 104553-0325 | STEN, FLEX, 64GRY8.1X8.1-1.0 (SOLD SEPARATELY) |

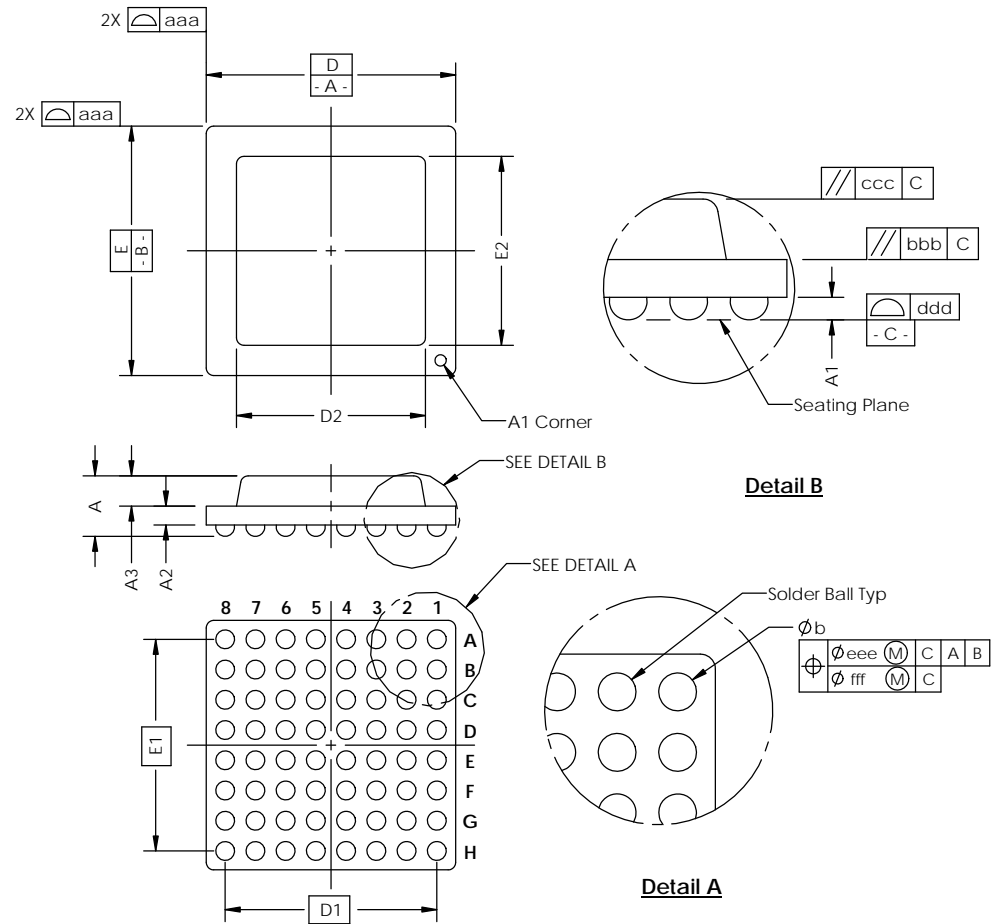
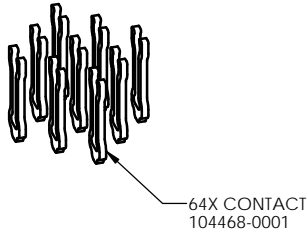
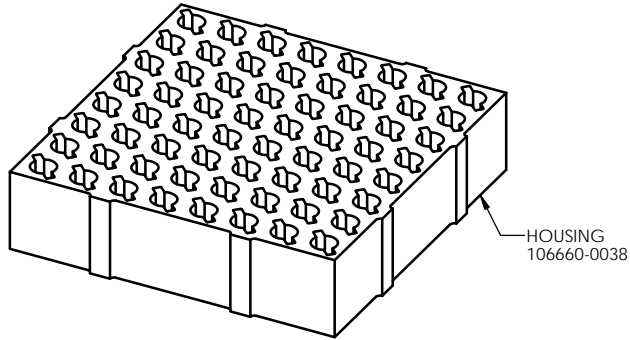
| | | | |
|--------------------------------------|--|-------------------|----------------------------------|
| UNLESS OTHERWISE SPECIFIED: | | NAME | DATE |
| DIMENSIONS ARE IN MILLIMETERS | | DRAWN | PVW 12/10/13 |
| TOLERANCES: | | CHECKED | MP 12/10/13 |
| ANGULAR: ± 1° | | LEGEND: | |
| X.X ±0.25 | | △ NOTE CALLOUT | TITLE: SCKT, 64GRY8.1X8.1-1.0 |
| X.XX ±0.10 | | ○ REVISION CHANGE | |
| X.XXX ±0.050 | | ○ ITEM NUMBER | |
| INTERPRET GEOMETRIC TOLERANCING PER: | | DWG. NO. | |
| MATERIAL | | 104670-0038 | |
| FINISH | | REV | |
| DO NOT SCALE DRAWING | | A | |

PROPRIETARY AND CONFIDENTIAL

THE INFORMATION CONTAINED IN THIS DRAWING IS THE SOLE PROPERTY OF HSIO TECHNOLOGIES, LLC. ANY REPRODUCTION IN PART OR AS A WHOLE WITHOUT THE WRITTEN PERMISSION OF HSIO TECHNOLOGIES, LLC IS PROHIBITED.

SCALE: 5:1
SIZE: C
SHEET 1 OF 2

| Device Specification | | | | | |
|---|------------|-----------|----------------------|------------|-------|
| Lead Count | N | 64 | Package Size | D | 8.100 |
| Columns | ND | 8 | | E | 8.100 |
| Rows | NE | 8 | Ball Spacing | D1 | 7.000 |
| Pitch | e | 1.00 | | E1 | 7.000 |
| Ball Size | b | 0.50±0.05 | Encapsulant/Top Size | D2 | N/A |
| Total Thickness | A | N/A | | E2 | N/A |
| Ball Height | A1 | 0.325 min | Pattern Style | FULL GRID | |
| Substrate Thickness | A2 | N/A | Perimeter Rows | N/A | |
| Top Thickness | A3 | | Center Array | N/A | |
| Form Tolerances | | | | | |
| Edge | aaa | 0.20 | Bottom | ddd | 0.15 |
| Substrate | bbb | 0.20 | Position | eee | 0.20 |
| top | ccc | 0.20 | Position | fff | 0.08 |
| All dimensions are in millimeters. *See footprint specification for pattern details. | | | | | |



Generic Representation with Full Grid Array

| PROPRIETARY AND CONFIDENTIAL | | | |
|--|--------------------------------|------|---|
| THE INFORMATION CONTAINED IN THIS DRAWING IS THE SOLE PROPERTY OF HSIO TECHNOLOGIES, LLC. ANY REPRODUCTION IN PART OR AS A WHOLE WITHOUT THE WRITTEN PERMISSION OF HSIO TECHNOLOGIES, LLC IS PROHIBITED. | | | |
| UNLESS OTHERWISE SPECIFIED: | NAME | DATE | HSIO TECHNOLOGIES, LLC. 13300 67th AVENUE NORTH MAPLE GROVE, MINNESOTA 55311 763-447-6260 |
| DIMENSIONS ARE IN MILLIMETERS | DRAWN | AS | |
| TOLERANCES: ANGULAR: ±1° XX ±0.25 XXX ±0.10 X:XXX ±0.050 | CHECKED | MP | |
| LEGEND: | | | TITLE: SCKT, 64GRY8.1X8.1-1.0 |
| △ NOTE CALLOUT ○ REVISION CHANGE ○ ITEM NUMBER | DWG. NO. 104670-0038 | | REV B |
| SCALE: 5:1 | | | SIZE: C SHEET 2 OF 2 |