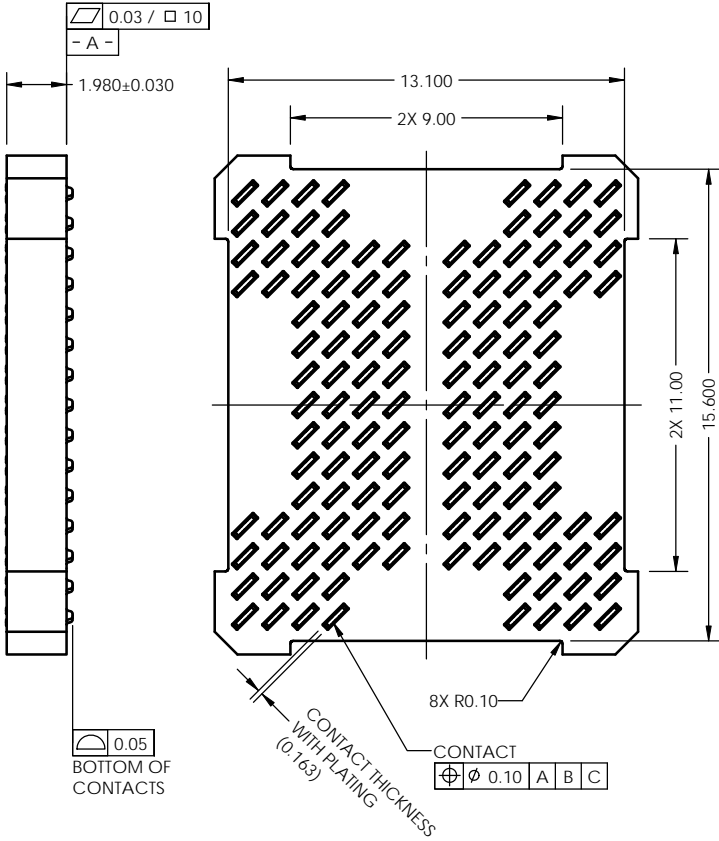
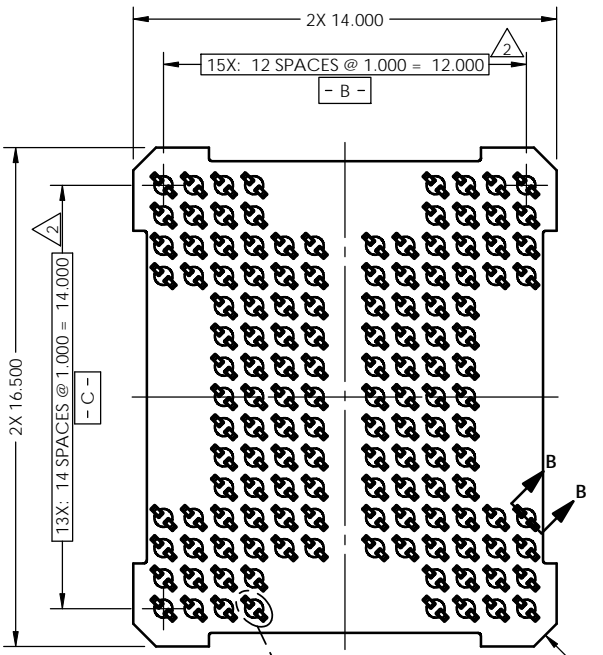


REV	ECO	BY	DESCRIPTION	APV	DATE
A	30895	SK	Initial Design	KW	09/14/11

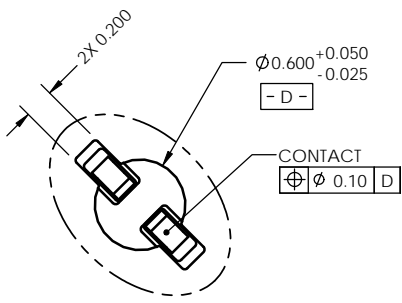


- Notes:
- Footprint part number is 104311-0293.
 - Dimension locates center of slot.
 - Press size 14.00 x 16.50.
 - Datums **- B -** and **- C -** are determined by $\phi 0.600$ opening in corner slots.
 - Unless otherwise specified, all features located $\oplus 0.10$ A B C

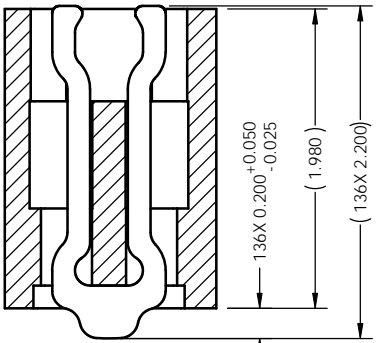
136X SEE DETAIL A

4X 0.75 X 45°

CONTACT WITH PLATING (0.163)
 CONTACT $\oplus \phi 0.10$ A B C
 BOTTOM OF CONTACTS $\frac{0.05}{\square}$



DETAIL A
SCALE 5:1



SECTION B-B
SCALE 5:1

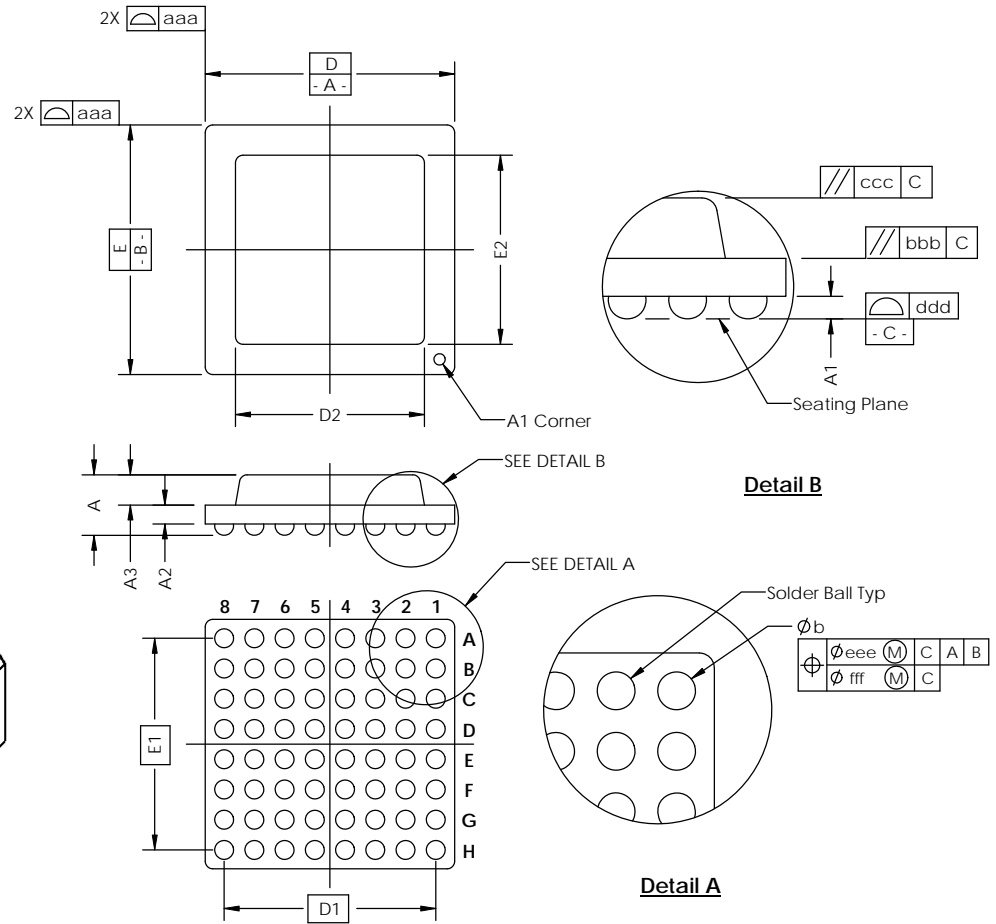
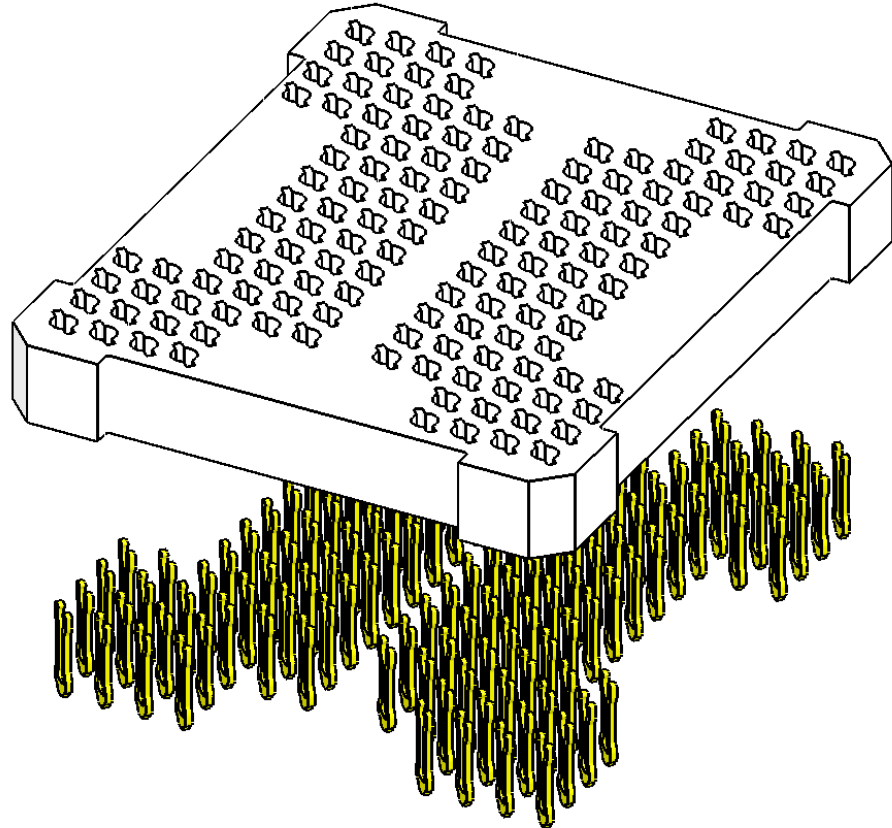
PARTS LIST	
PART NUMBER	DESCRIPTION
104670-0033	SCKT, 136GRY14x16.5-1.00
104671-0033	CS, 136GRY14x16.5-1.00
103864-0120	PRESS, DEV INS, 14 X 16.5 (SOLD SEPARATELY)
104553-0222	STEN FLEX, 136GRY14x16.5-1.00 (SOLD SEPARATELY)

UNLESS OTHERWISE SPECIFIED DIMENSIONS ARE IN MILLIMETERS DIM'S APPLY AFTER PLATING TOLERANCES UNLESS OTHERWISE NOTED: ANGLES ±1° DECIMALS XX ±0.25 XXX ±0.10 XXXX ±0.50		THE INFORMATION CONTAINED IN THIS DRAWING IS THE SOLE PROPERTY OF CASCADE MICROTECH, INC. ANY REPRODUCTION IN PART OR WHOLE WITHOUT THE WRITTEN PERMISSION OF CASCADE MICROTECH, INC. IS PROHIBITED.	
CAD GENERATED DRAWING DO NOT MANUALLY UPDATE		7115 NORTHLAND TERRACE SUITE 400 BROOKLYN PARK, MN 55428 (763) 509-0066	
DRAWING APPROVALS		CASCADE MICROTECH	
DESIGN: S. Klanderud	DATE: 09/14/11	SCKT, 136GRY14X16.5-1.00	
APPV: K. Wilson	DATE: 09/14/11		
LEGEND: NOTE CALLOUT REVISION CHANGE ITEM NUMBER		THIRD ANGLE PROJECTION	SCALE: C
		CAD FORMAT: SOLIDWORKS	DESCRIPTION: 104670-0033
		SHEET: A of 2	

SEE BOM

Device Specification					
Lead Count	N	136	Package Size	D	14.00
Columns	ND	13		E	16.50
Rows	NE	15	Ball Spacing	D1	12.00
Pitch	e	1.000		E1	14.00
Ball Size	b	0.50±0.05	Encapsulant/ Top Size	D2	n/a
Total Thickness	A	n/a		E2	n/a
Ball Height	A1	0.30 min	Pattern Style	IRREGULAR*	
Substrate Thickness	A2	n/a	Perimeter Rows	n/a	
Top Thickness	A3	n/a	Center Array	n/a	
Form Tolerances					
Edge	aaa	0.20	Bottom	ddd	0.15
Substrate	bbb	0.20	Position	eee	0.20
top	ccc	0.20	Position	fff	0.08

All dimensions are in millimeters.
*See footprint specification for pattern details.



Generic Representation with Full Grid Array

THE INFORMATION CONTAINED IN THIS DRAWING IS THE SOLE PROPERTY OF CASCADE MICROTECH, INC.
ANY REPRODUCTION IN PART OR WHOLE WITHOUT THE WRITTEN PERMISSION OF CASCADE MICROTECH, INC. IS PROHIBITED.

UNLESS OTHERWISE SPECIFIED
- DIMENSIONS ARE IN MILLIMETERS
- DIMS APPLY AFTER PLATING
TOLERANCES UNLESS OTHERWISE NOTED: DECIMALS

ANGLES: X.X ±0.25
X.XX ±0.10
X.XXX ±0.050

LEGEND:
 NOTE CALLOUT
 REVISION CHANGE
 ITEM NUMBER

7115 NORTHLAND TERRACE SUITE 400
BROOKLYN PARK, MN 55428
(763) 509-0066

SCKT, 136GRY14X16.5-1.00

DESIGN	CAD FORUM	DRAWING NO.	104670-0033	REV.	A
SCALE	SOLIDWORKS	See Page 1		PAGE 2 of 2	