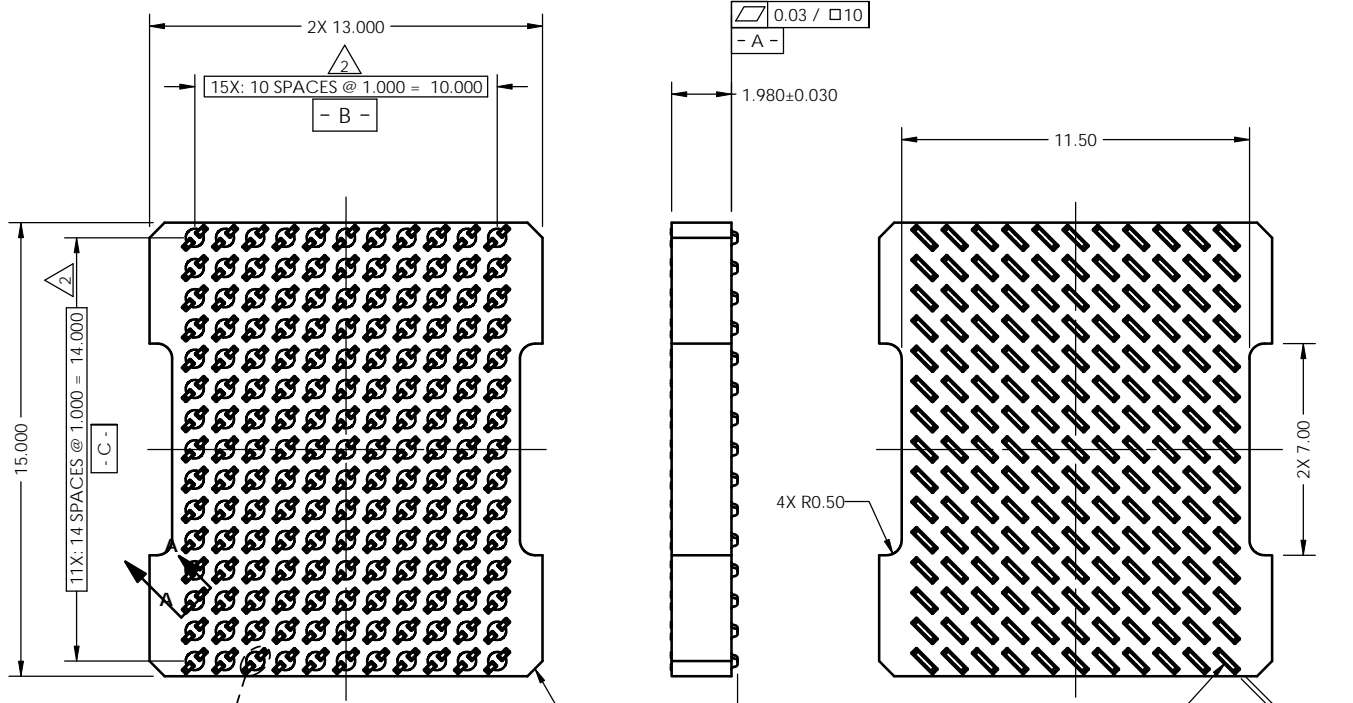
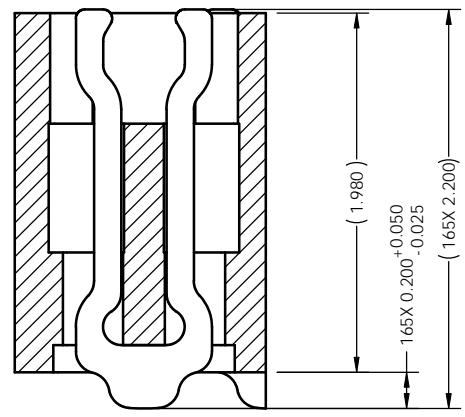
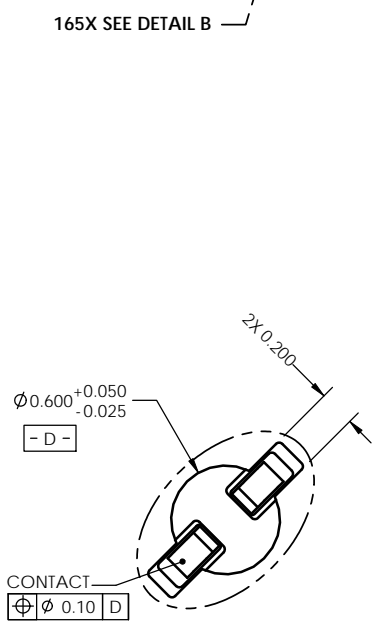


REV	ECO	BY	DESCRIPTION	APV	DATE
A	30774	SK	Initial Design	KW	04/25/11



- Notes:
- Footprint part number is 104311-0278.
 - Locates center of contact slots.
 - Press size 13.00 x 15.00.
 - Datums **- B -** and **- C -** are determined by $\phi 0.600$ opening in corner slots.
 - Unless otherwise specified, all features located $\oplus \phi 0.10$ A B C

PARTS LIST	
PART NUMBER	DESCRIPTION
104670-0030	SCKT, 165GRY13X15-1.00
104671-0030	CS, 165GRY13X15-1.00
103864-0130	PRESS, DEV INS, 13 X 15 (SOLD SEPARATELY)
104553-0211	STEN FLEX, 165GRY13X15-1.00 (SOLD SEPARATELY)



UNLESS OTHERWISE SPECIFIED
DIMENSIONS ARE IN MILLIMETERS
DIM'S APPLY AFTER PLATING
TOLERANCES UNLESS OTHERWISE NOTED:

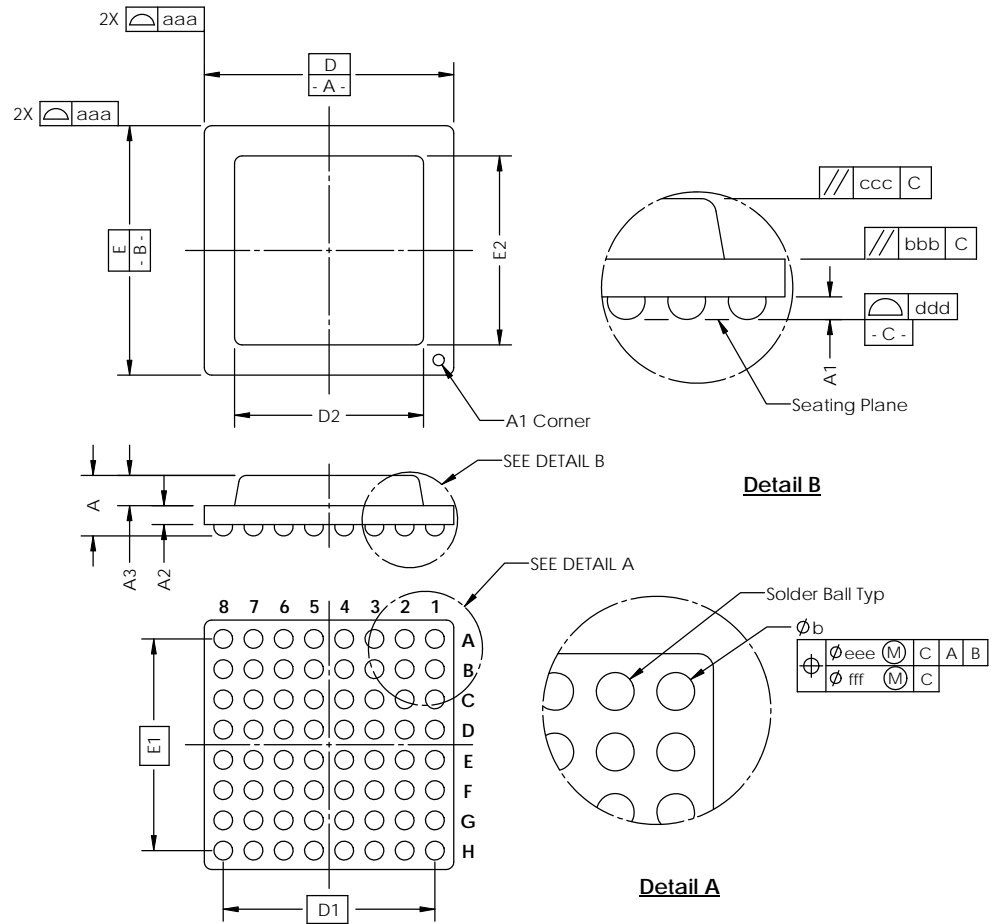
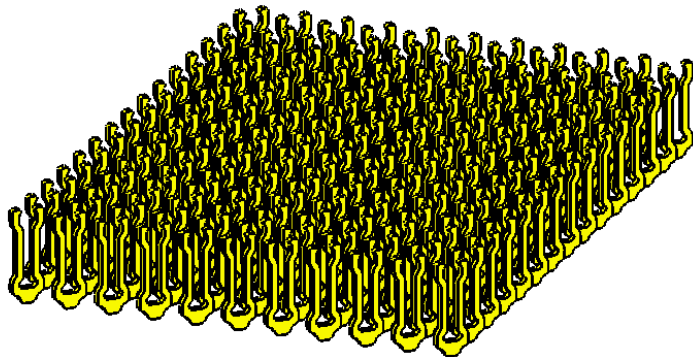
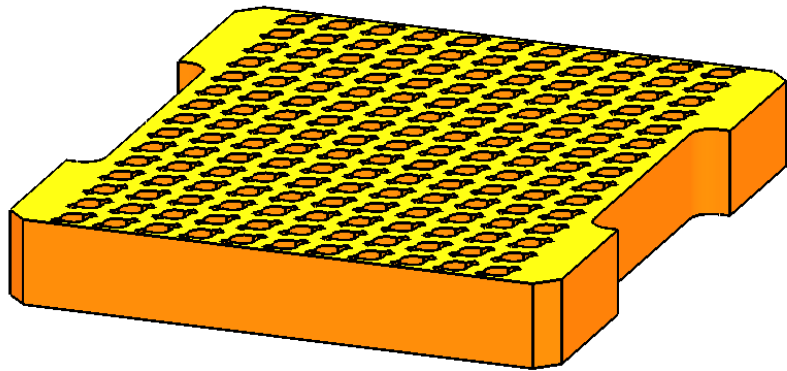
ANGLES	DECIMALS	DRAWING APPROVALS		THE INFORMATION CONTAINED IN THIS DRAWING IS THE SOLE PROPERTY OF CASCADE MICROTECH, INC. ANY REPRODUCTION IN PART OR WHOLE WITHOUT THE WRITTEN PERMISSION OF CASCADE MICROTECH, INC. IS PROHIBITED.	
±1°	XX ±0.25	NAME	DATE	7115 NORTHLAND TERRACE SUITE 400 BROOKLYN PARK, MN 55428 (763) 509-0066	
	XX ±0.10	S. Klanderud	04/25/11	 SCKT, 165GRY13X15-1.0	
	XXX ±0.050	K. Wilson	04/25/11		
LEGEND:		THIRD ANGLE PROJECTION		SCALE	SEE BOM
	NOTE CALLOUT			MATERIAL	SOLIDWORKS
	REVISION CHANGE			QUANTITY	104670-0030
	ITEM NUMBER			REV	A
				SHEET	1 of 2

DETAIL B
Scale 4:1

SECTION A-A
Scale 4:1

Device Specification					
Lead Count	N	165	Package Size	D	13.00
Columns	ND	11		E	15.00
Rows	NE	15	Ball Spacing	D1	10.00
Pitch	e	1.000		E1	14.00
Ball Size	b	0.50±0.05	Encapsulant/ Top Size	D2	n/a
Total Thickness	A	n/a		E2	n/a
Ball Height	A1	0.30 min	Pattern Style	Full*	
Substrate Thickness	A2	n/a	Perimeter Rows	n/a	
Top Thickness	A3	n/a	Center Array	n/a	
Form Tolerances					
Edge	aaa	0.20	Bottom	ddd	0.15
Substrate top	bbb	0.20	Position	eee	0.20
	ccc	0.20	Position	fff	0.08

All dimensions are in millimeters.
*See footprint specification for pattern details.



Generic Representation with Full Grid Array

THE INFORMATION CONTAINED IN THIS DRAWING IS THE SOLE PROPERTY OF CASCADE MICROTECH, INC.
ANY REPRODUCTION IN PART OR WHOLE WITHOUT THE WRITTEN PERMISSION OF CASCADE MICROTECH, INC. IS PROHIBITED.

UNLESS OTHERWISE SPECIFIED
- DIMENSIONS ARE IN MILLIMETERS
- DIMES APPLY AFTER PLATING
TOLERANCES UNLESS OTHERWISE NOTED: DECIMALS
ANGLES X.X ±0.25
X.XX ±0.10
X.XXX ±0.050

LEGEND:
 NOTE CALLOUT
 REVISION CHANGE
 ITEM NUMBER

CASCADE MICROTECH, INC.
7115 NORTHLAND TERRACE SUITE 400
BROOKLYN PARK, MN 55428
(763) 509-0066

SCKT, 165GRY13X15-1.0

SCALE: C CAD FORNAT: SOLIDWORKS DRAWING NO: 104670-0030 REV: A
 MATERIAL: See Page 1 SHEET: 2 of 2