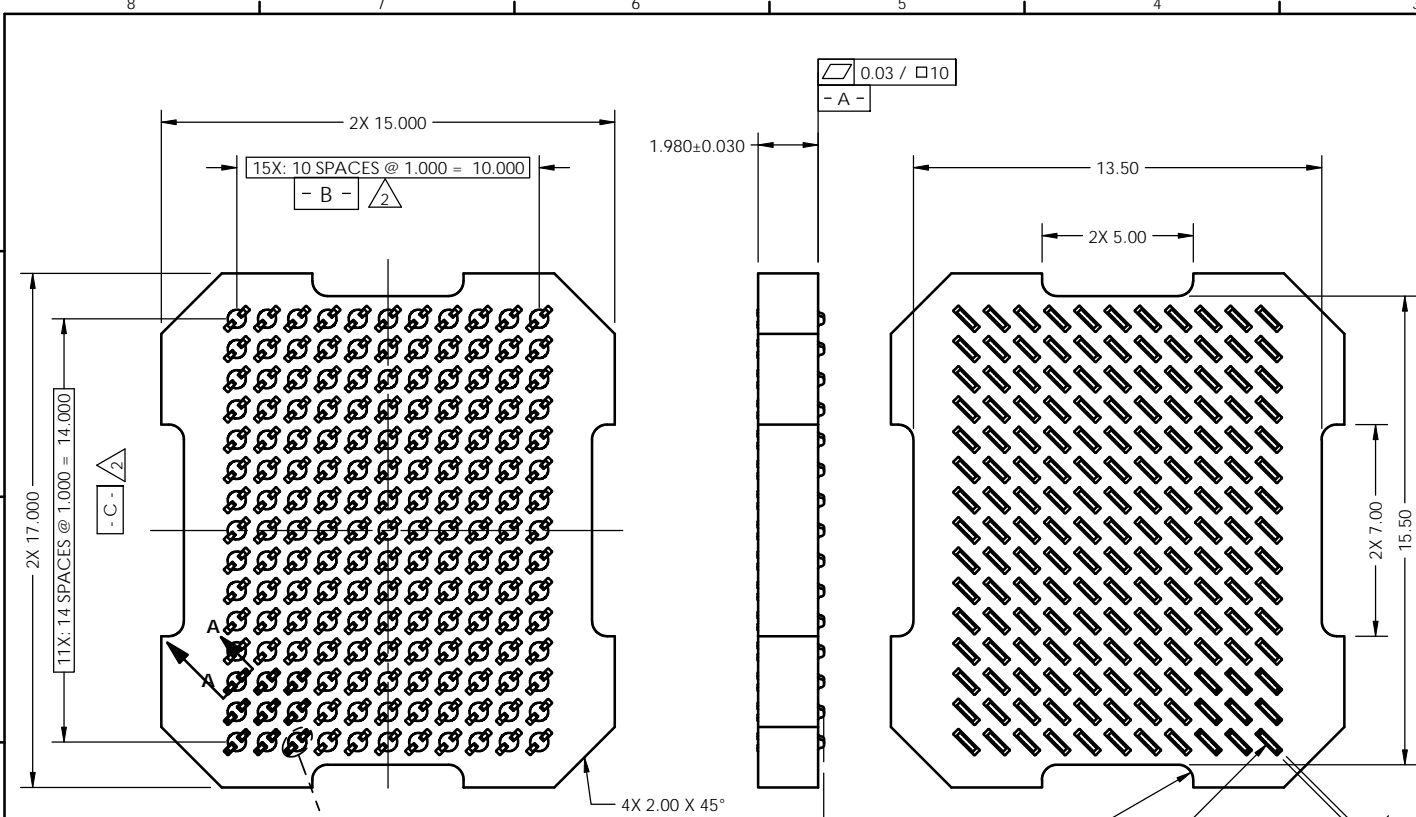
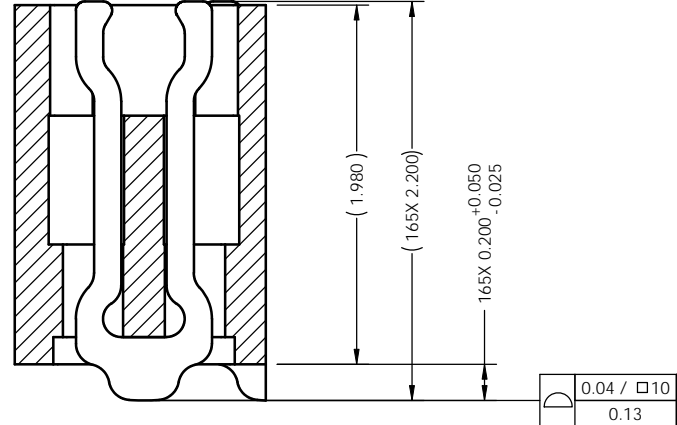
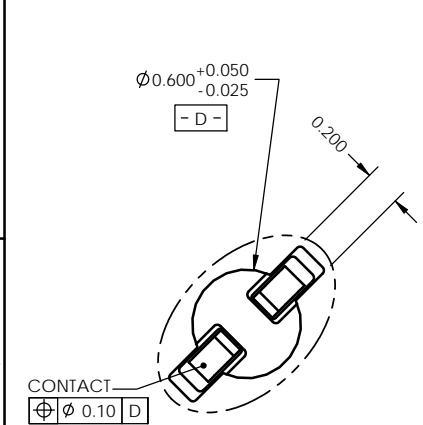


REV	ECO	BY	DESCRIPTION	APV	DATE
A	30456	EJT	Initial Design	MP	07/06/10



- Notes:
- Footprint part number is 104311-0240.
 - Locates center of contact slots.
 - Press size 15.00 x 17.00.
 - Datums B and C are determined by $\phi 0.600$ opening in corner slots.
 - Unless otherwise specified, all features located $\oplus 0.10$ A B C

PARTS LIST	
PART NUMBER	DESCRIPTION
104670-0028	SCKT, 165GRY15X17-1.00
104671-0028	CS, 165GRY15X17-1.00
103864-0026	PRESS, DEV INS, 15 X 17 (SOLD SEPARATELY)
104553-0184	STEN FLEX, 165GRY15X17-1.00 (SOLD SEPARATELY)



DETAIL B
Scale 4:1

SECTION A-A
Scale 4:1

UNLESS OTHERWISE SPECIFIED
DIMENSIONS ARE IN MILLIMETERS
DIM'S APPLY AFTER PLATING
TOLERANCES UNLESS OTHERWISE NOTED:

ANGLES	DECIMALS
±1°	XX ±0.25
	XXX ±0.10
	XXXX ±0.050

LEGEND:

- NOTE CALLOUT
- REVISION CHANGE
- ITEM NUMBER

THE INFORMATION CONTAINED IN THIS DRAWING IS THE SOLE PROPERTY OF CASCADE MICROTECH, INC.
ANY REPRODUCTION IN PART OR WHOLE WITHOUT THE WRITTEN PERMISSION OF CASCADE MICROTECH, INC. IS PROHIBITED.

CAD GENERATED DRAWING
DO NOT MANUALLY UPDATE

DRAWING APPROVALS

DESIGN	DATE
E.Turin	07/01/10
APP'D	DATE
M.Peery	07/06/10

THIRD ANGLE PROJECTION

CASCADE MICROTECH

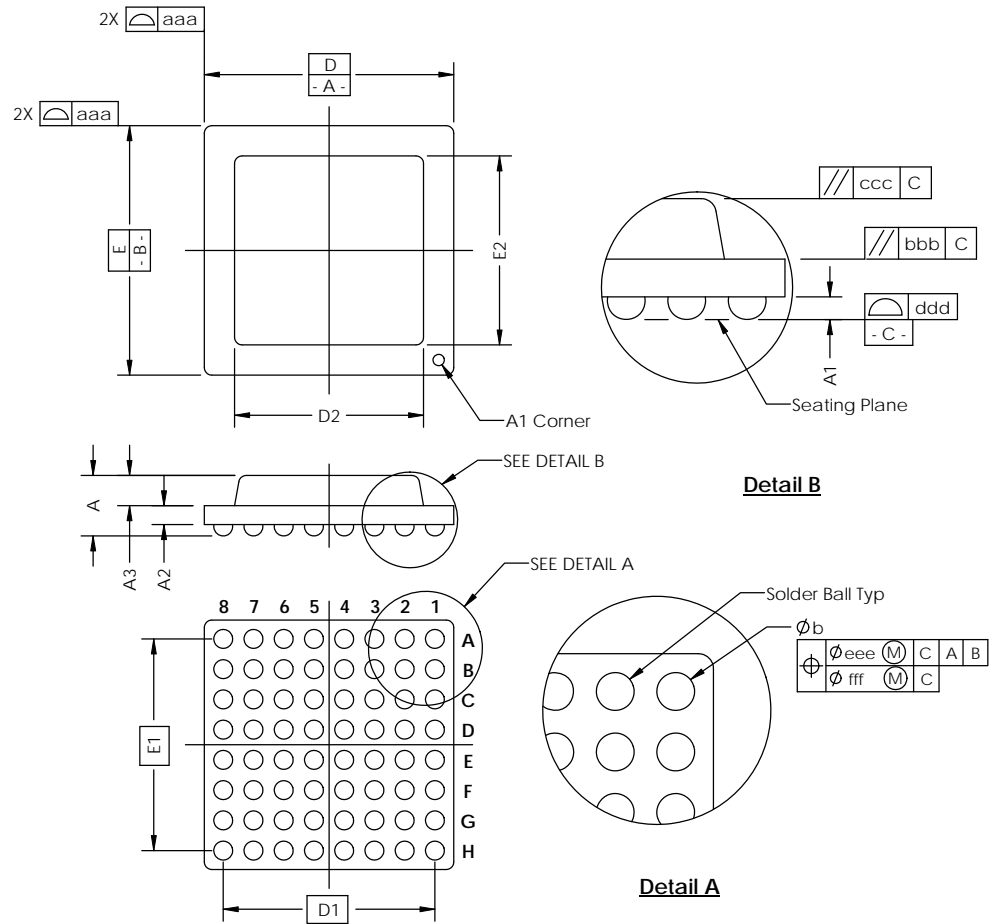
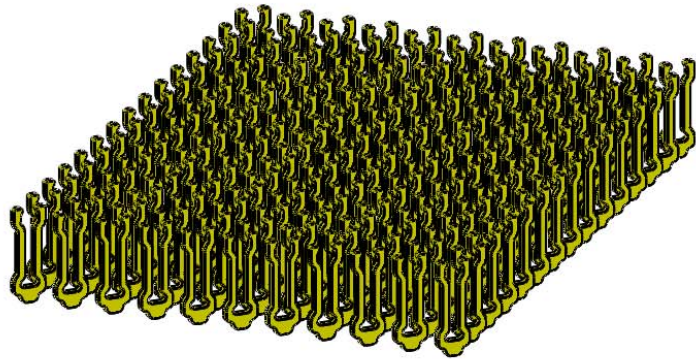
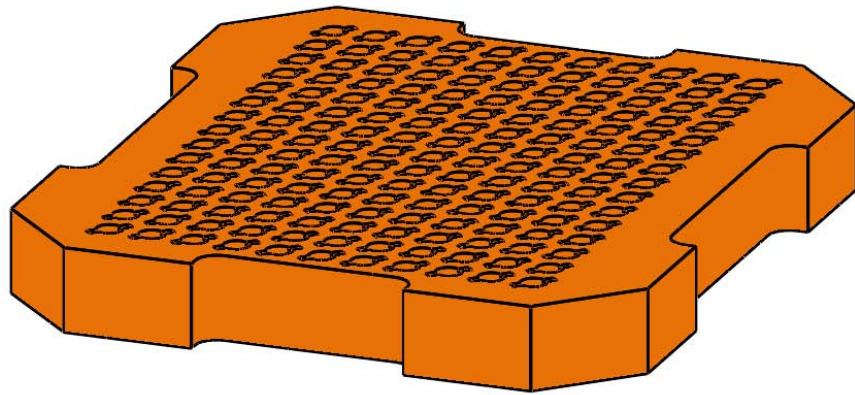
7115 NORTHLAND TERRACE SUITE 400
BROOKLYN PARK, MN 55428
(763) 509-0066

SCKT, 165GRY15X17-1.0

SCALE	MATERIAL	QUANTITY	REV
C	SOLIDWORKS	104670-0028	A
SCALE	MATERIAL	SEE BOM	SHEET 1 of 1

Device Specification					
Lead Count	N	165	Package Size	D	15.00
Columns	ND	11		E	17.00
Rows	NE	15	Ball Spacing	D1	10.00
Pitch	e	1.000		E1	14.00
Ball Size	b	0.50±0.05	Encapsulant/ Top Size	D2	n/a
Total Thickness	A	n/a		E2	n/a
Ball Height	A1	0.30 min	Pattern Style	Full*	
Substrate Thickness	A2	n/a	Perimeter Rows	n/a	
Top Thickness	A3	n/a	Center Array	n/a	
Form Tolerances					
Edge	aaa	0.20	Bottom	ddd	0.15
Substrate	bbb	0.20	Position	eee	0.20
top	ccc	0.20	Position	fff	0.08

All dimensions are in millimeters.
*See footprint specification for pattern details.



Generic Representation with Full Grid Array

THE INFORMATION CONTAINED IN THIS DRAWING IS THE SOLE PROPERTY OF CASCADE MICROTECH, INC. ANY REPRODUCTION IN PART OR WHOLE WITHOUT THE WRITTEN PERMISSION OF CASCADE MICROTECH, INC. IS PROHIBITED.			
UNLESS OTHERWISE SPECIFIED - DIMENSIONS ARE IN MILLIMETERS - DIMES APPLY AFTER PLATING TOLERANCES UNLESS OTHERWISE NOTED:	DECIMALS X.X ±0.25 X.XX ±0.10 X.XXX ±0.050	CASCADE MICROTECH, INC.	7115 NORTHLAND TERRACE SUITE 400 BROOKLYN PARK, MN 55428 (763) 509-0066
LEGEND:		SCKT, 165GRY15X17-1.0	
(X) NOTE CALLOUT	(R) REVISION CHANGE	(I) ITEM NUMBER	
SCALE: C		DRAWING NO: 104670-0028	REV: A
MATERIAL: SOLIDWORKS		See Page 1 2 of 2	