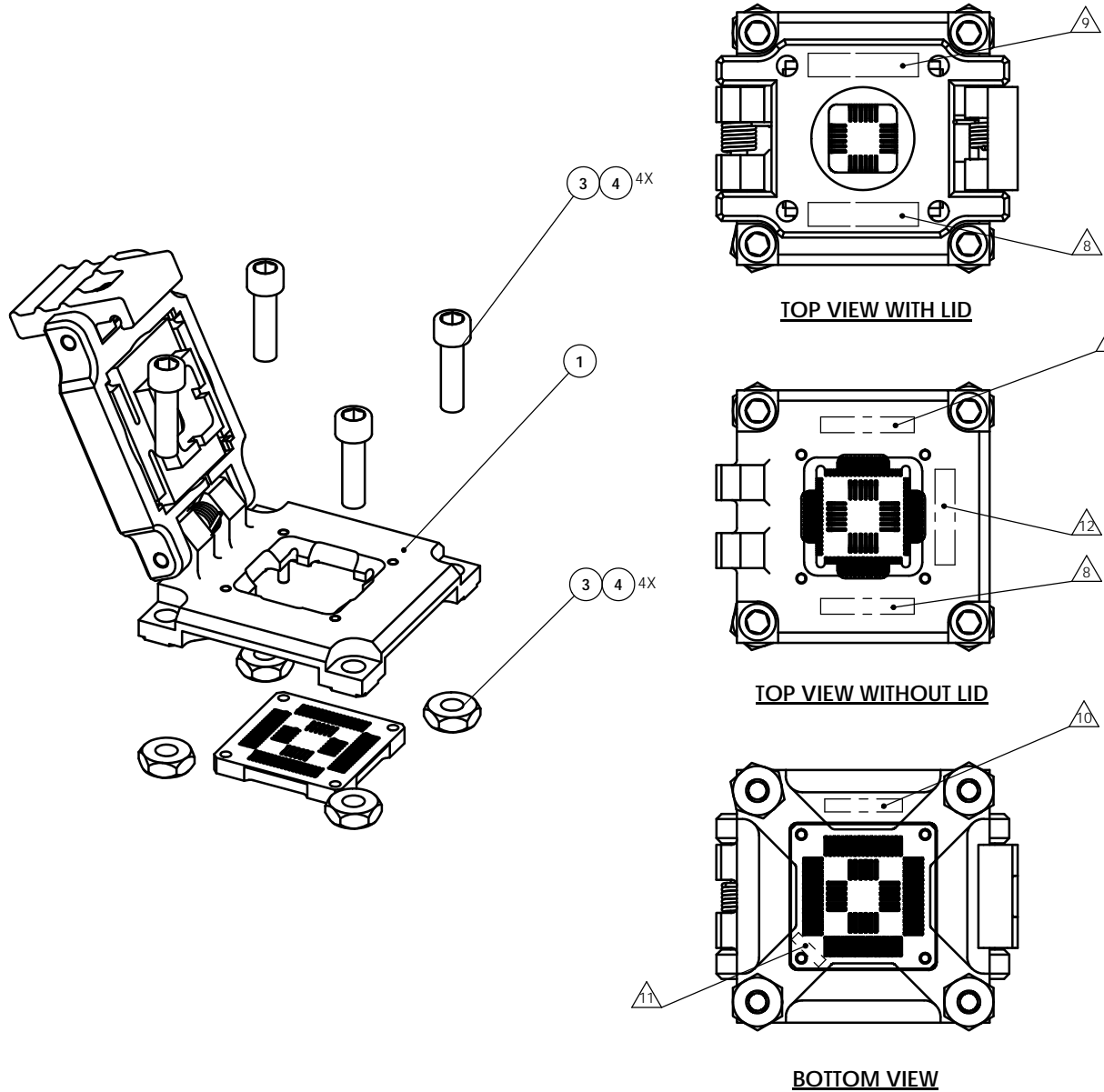


REV	ECO	BY	DESCRIPTION	APV	DATE
B		EJT	Redrew to current standards Updated contact set	MP	09/21/09



**TOP VIEW WITH LID**

**TOP VIEW WITHOUT LID**

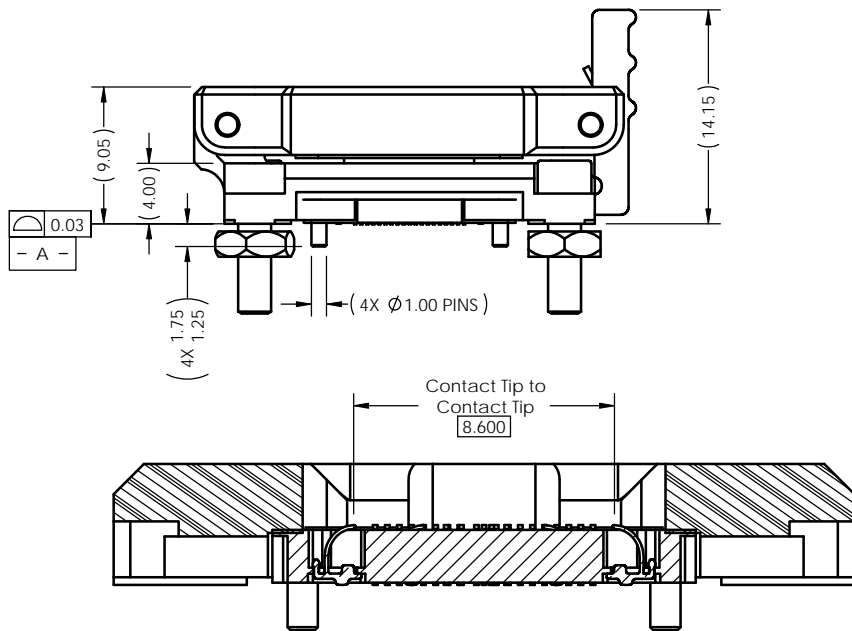
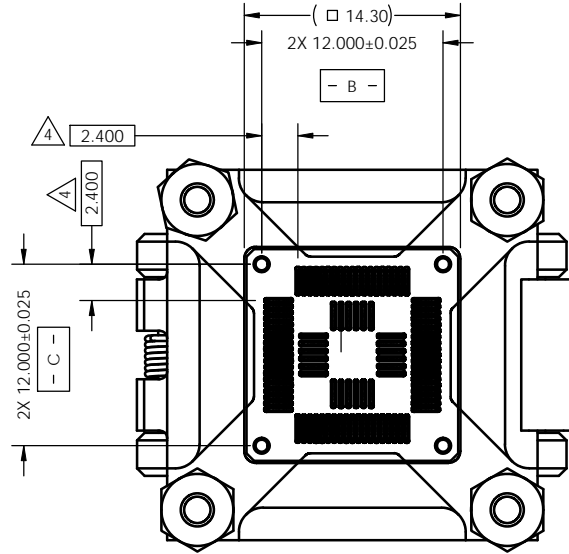
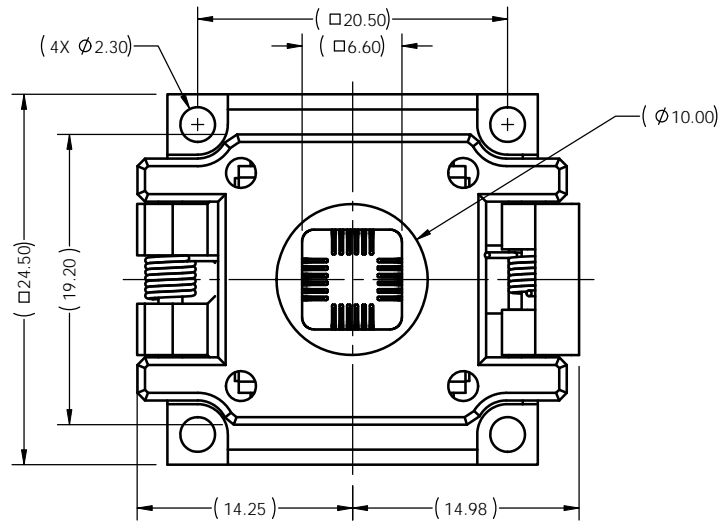
**BOTTOM VIEW**

Notes:

- Latches to move freely and return to closed position when released.
- Tighten PCB mounting fasteners to 2-3 in-lbs. (-0.22-0.33 Nm).
- Footprint part number is 100672-0012.
- Dimension locates center line of contact.
- Socket is RoHS compliant.
- Minimum force applied to device at test is 3500g.
- Customer part number.
- Company logo.
- "MADE IN USA" (Date Code).
- Frame part number.
- Contact set part number (if room allows).
- Socket part number and rev. level.

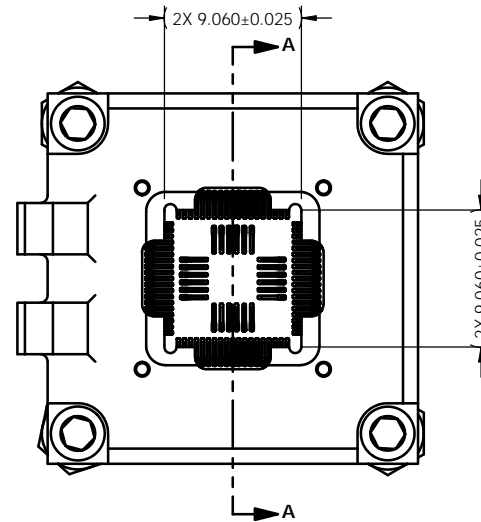
Parts List				
Item	Qty	Part Number	Description	
0		106458-0043	SOCKET, 76PQFN09-0.40, HINGED	
1	1	101082-0150	ASSY, LID/FRAME, QFN09, 1.80	
2	1	106460-0043	CS, 76PQFN09-0.40	
3	1	101133-0001	KIT, HDW, #2-56 X 5/16, 4	
4	1	101133-0002	KIT, HDW, M2.0 X 8.0, 4	

UNLESS OTHERWISE SPECIFIED DIMENSIONS ARE IN MILLIMETERS DIM'S APPLY AFTER PLATING TOLERANCES UNLESS OTHERWISE NOTED: ANGLES DECIMALS ±1° .XX ±0.25 XX ±0.10 XXX ±0.50		THE INFORMATION CONTAINED IN THIS DRAWING IS THE SOLE PROPERTY OF CASCADE MICROTECH, INC. ANY REPRODUCTION IN PART OR WHOLE WITHOUT THE WRITTEN PERMISSION OF CASCADE MICROTECH, INC. IS PROHIBITED.	
CAD GENERATED DRAWING DO NOT MANUALLY UPDATE		7115 NORTHLAND TERRACE SUITE 400 BROOKLYN PARK, MN 55428 (763) 509-0066	
DRAWING APPROVALS		CASCAD MICROTECH	
NAME	DATE	SCKT, 76PQFN09-0.40 HINGED	
E.Turin	09/18/09		
APPROV:	DATE		
M.Peery	09/21/09		
THIRD ANGLE PROJECTION		SCALE	SHEET
		C SOLIDWORKS	106458-0043 B
		NATURAL	See BOM 1 of 3



**SECTION A-A**

Scale 2:1

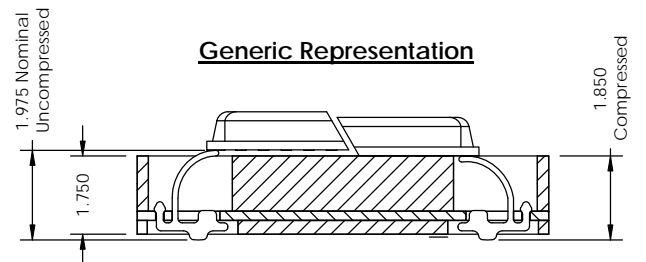
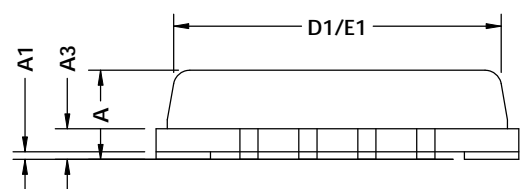
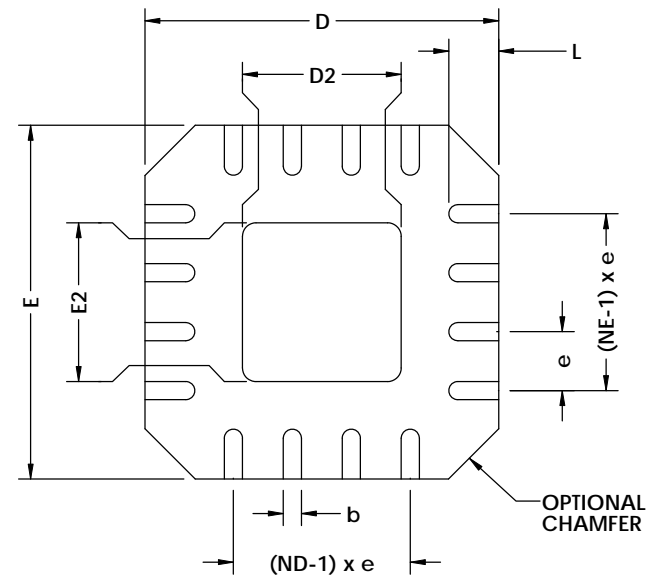
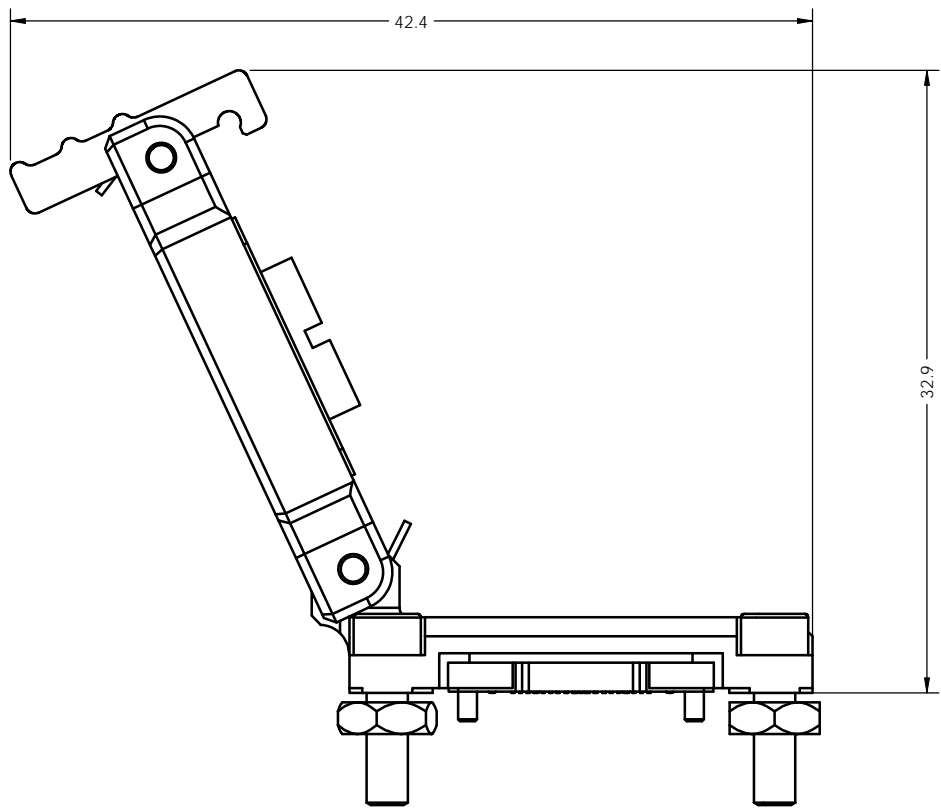


**TOP VIEW (W/O COVER)**

<small>THE INFORMATION CONTAINED IN THIS DRAWING IS THE SOLE PROPERTY OF CASCADE MICROTECH, INC. ANY REPRODUCTION IN PART OR WHOLE WITHOUT THE WRITTEN PERMISSION OF CASCADE MICROTECH, INC. IS PROHIBITED.</small>			
<small>UNLESS OTHERWISE SPECIFIED DIMENSIONS ARE IN MILLIMETERS DIM'S APPLY AFTER PLATING TOLERANCES UNLESS OTHERWISE NOTED:</small>		<small>DECIMALS X.X <math>\pm 0.25</math> X.XX <math>\pm 0.10</math> X.XXX <math>\pm 0.050</math></small>	
<small>LEGEND:</small> NOTE CALLOUT REVISION CHANGE ITEM NUMBER		7115 NORTHLAND TERRACE SUITE 400 BROOKLYN PARK, MN 55428 (763) 509-0066	
<small>DATE</small> C <small>DRAWN FOR</small> C <small>SCALE</small> NATURAL		<small>DRAWING NO.</small> 106458-0043 <small>REV.</small> A <b>SCKT, 76PQFN09-0.40 HINGED</b> See Page 1	
<small>SHEET</small> 2 of 3		<small>SHEET</small> 2 of 3	

SOCKET FOR DEVICES THAT ARE WITHIN THESE SPECIFICATIONS			
Lead Count	n	76	
Lead Count X/Y	ND/NE	19	19
Device Type		QFN (MLP, MLF)	
Package Size	D/E	9.00±0.05*	9.00±0.05*
Pitch	e	0.40	
Encapsulant Size	D1/E1	N/A	N/A
Ground Pad	D2/E2	5.0 min	5.00 min
Package Height	A	0.65-1.00	
Pad Height	A1	0.00-0.05	
Substrate Height	A3	0.20 min	
Pad Width	b	0.20 min	
Pad Length	L	0.30 min	

All Dimensions are in millimeters  
 \* Due to the potential small size of the device pads, the device opening is 0.05+0.40/-0.000 larger than D and E. At maximum material conditions (maximum device size, minimum connector opening) there will be an interference fit. Contact Gryphics for more details.  
 \*\* See PCB footprint for ground pad size and location.



**Generic Representation**

**Generic Representation**

<small>THE INFORMATION CONTAINED IN THIS DRAWING IS THE SOLE PROPERTY OF CASCADE MICROTECH, INC. ANY REPRODUCTION IN PART OR WHOLE WITHOUT THE WRITTEN PERMISSION OF CASCADE MICROTECH, INC. IS PROHIBITED.</small>			
<small>UNLESS OTHERWISE SPECIFIED - DIMENSIONS ARE IN MILLIMETERS - DIMS APPLY AFTER PLATING - TOLERANCES UNLESS OTHERWISE NOTED:</small>		<b>7115 NORTHLAND TERRACE SUITE 400</b> <b>BROOKLYN PARK, MN 55428</b> <b>(763) 509-0066</b>	
<small>DECIMALS X.X ±0.25 X.XX ±0.10 X.XXX ±0.050</small>	<b>SCKT, 76PQFN09-0.40</b> <b>HINGED</b>		
<small>LEGEND:</small> NOTE CALLOUT REVISION CHANGE ITEM NUMBER	<small>DATE</small> <b>C</b>	<small>DRAWING NO.</small> <b>SOLIDWORKS</b>	<small>PART NO.</small> <b>106458-0043</b>
<small>SCALE</small> See Page 1	<small>MATERIAL</small>	<small>REV</small> <b>B</b>	<small>SHEET</small> 3 of 3